

Cultural Landscapes in the Western United States



A Workshop Cosponsored by the
Colorado Office of Archaeology
and Historic Preservation
and the U.S. National Park Service
Trinity United Methodist Church
Denver, Colorado
October 4 – 5, 2011

Cultural Landscapes in the Western United States

Segment 3 of 9

The Hispanic / Latino Landscape Legacy

This is an automated presentation of the speakers' PowerPoint slides with their notes if provided and some video (mostly from the second day) of the presentations,. Due to the file size of the October 4 & 5, 2011 presentations the workshop has been uploaded in nine thematic segments. The viewer can pause, advance forward or return to any slide by clicking on the index at any time.

Cultural Landscapes Western United States

Day One

04 October 2011

segment 1 **Protecting Cultural Landscapes**

1	Overview of Cultural Landscapes and the National Register	Barbar Wyatt	National Park Service
2	Section 106 Compliance and Cultural Landscapes	Amy Pallante	CO SHPO
3	Threats to Cultural Landscapes, The National Trust as a Landscape Advocate	Rebecca Schwendler	NTHP

segment 2 **Linear Landscapes**

4	The Work of the National Trails Office	Michael Elliot	National Park Service
---	--	----------------	-----------------------

segment 3 **The Hispanic/ Latino Landscape Legacy**

5	An Overview of Hispanic American/ Latino Landscapes	Maria Mondragon-Valdez	Valdez & Associates
6	Cultural Landscapes Barrio Logan, San Diego, California	Melanie Lytle	URS Corporation

segment 4 **Nominating Designed Landscapes to The National Register**

7	Denver Civic Center	Tina Bishop	Mundus Bishop Design, Inc.
8 & 9	CCC Landscapes	Ann Komara	University Colorado Denver

segment 5 **Innovations in Landscape Surveys**

10	Historic American Landscape Survey (HALS)	Ann Mullins	WJM Design
11	BLM Landscape Inventory Initiatives	Don Bruns	Bureau Land Management
12	Cultural Landscape Inventory	Roberta Young	National Park Service

11:00 Segment 3: **The Hispanic/Latino Landscape Legacy**

5. An Overview of Hispanic American/Latino Landscapes
Maria Mondragon-Valdez (N.I.C.)
6. Cultural Landscapes in Barrio Logan, San Diego, California
Melanie Lytle (URS Corporation)

Cultural Landscapes in the Western United States

Maria Mondragon-Valdez
Valdez & associates

The Hispanic / Latino
Landscape Legacy (N.I.C.)

**AN OVERVIEW OF HISPANIC
AMERICAN/ LATINO
LANDSCAPES**

Cultural Landscapes in the Western United States

Melanie Lytle
URS Corporation

The Hispanic / Latino
Landscape Legacy

**CULTURAL LANDSCAPES
IN BARRIO LOGAN, SAN
DIEGO, CA**



Preserving the Barrio

Identifying and Evaluating the Urban Mexican-American Cultural Landscape in San Diego, California

Community Plan update offered fresh opportunity...





LEGEND

- Barrio Logan Community Plan Area
- Freeway/Ramp
- Park/Open Space
- Port District
- City Boundary
- SDMTS Trolley and Station
- School

*The Port District is not within the jurisdiction of the City but the existing plan shows it within its boundaries.

Scale: 0 500 1000 2000 feet

North Arrow

...to identify and preserve historic resources.

Historical Background

Early 20th Century: Bayfront land developed for maritime and naval use.



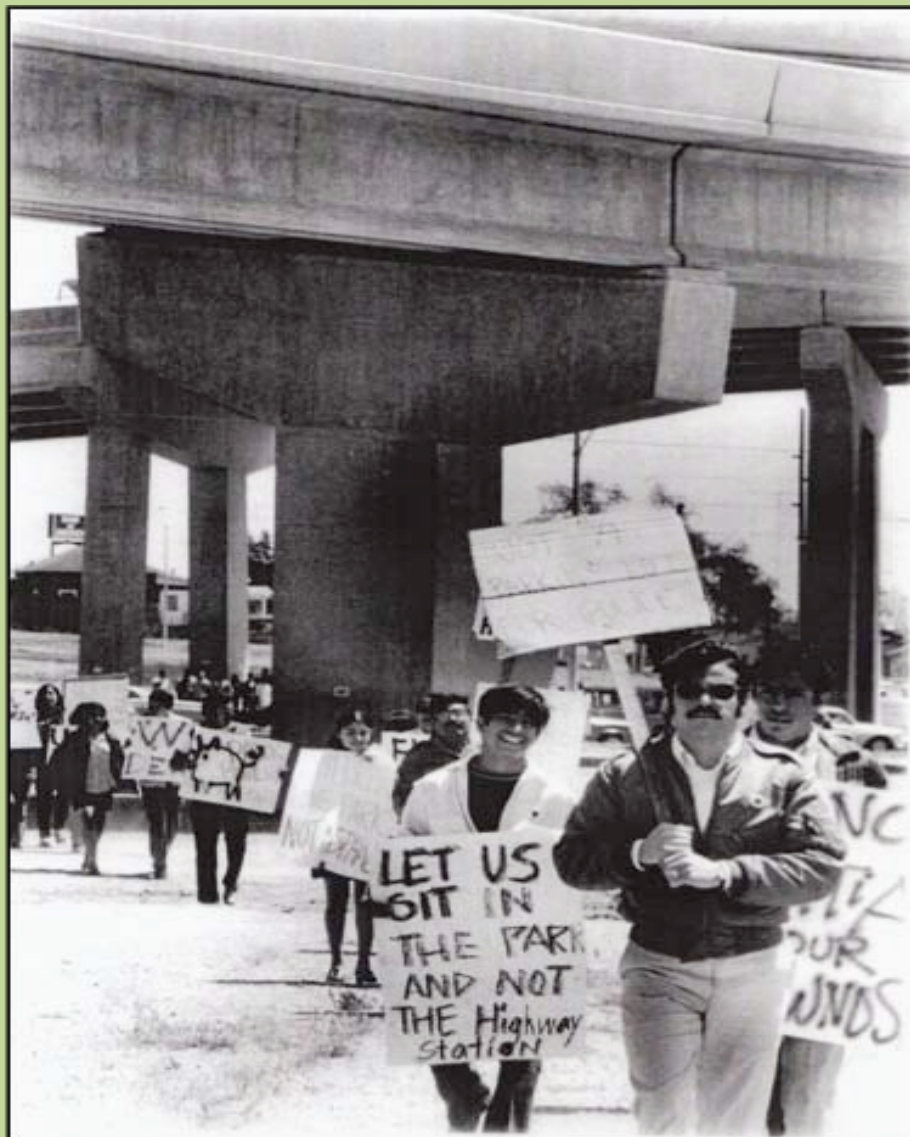
1920s-1950: Exodus of wealthier Caucasian residents and migration of Mexican Americans, African Americans, and Asian Americans into area.



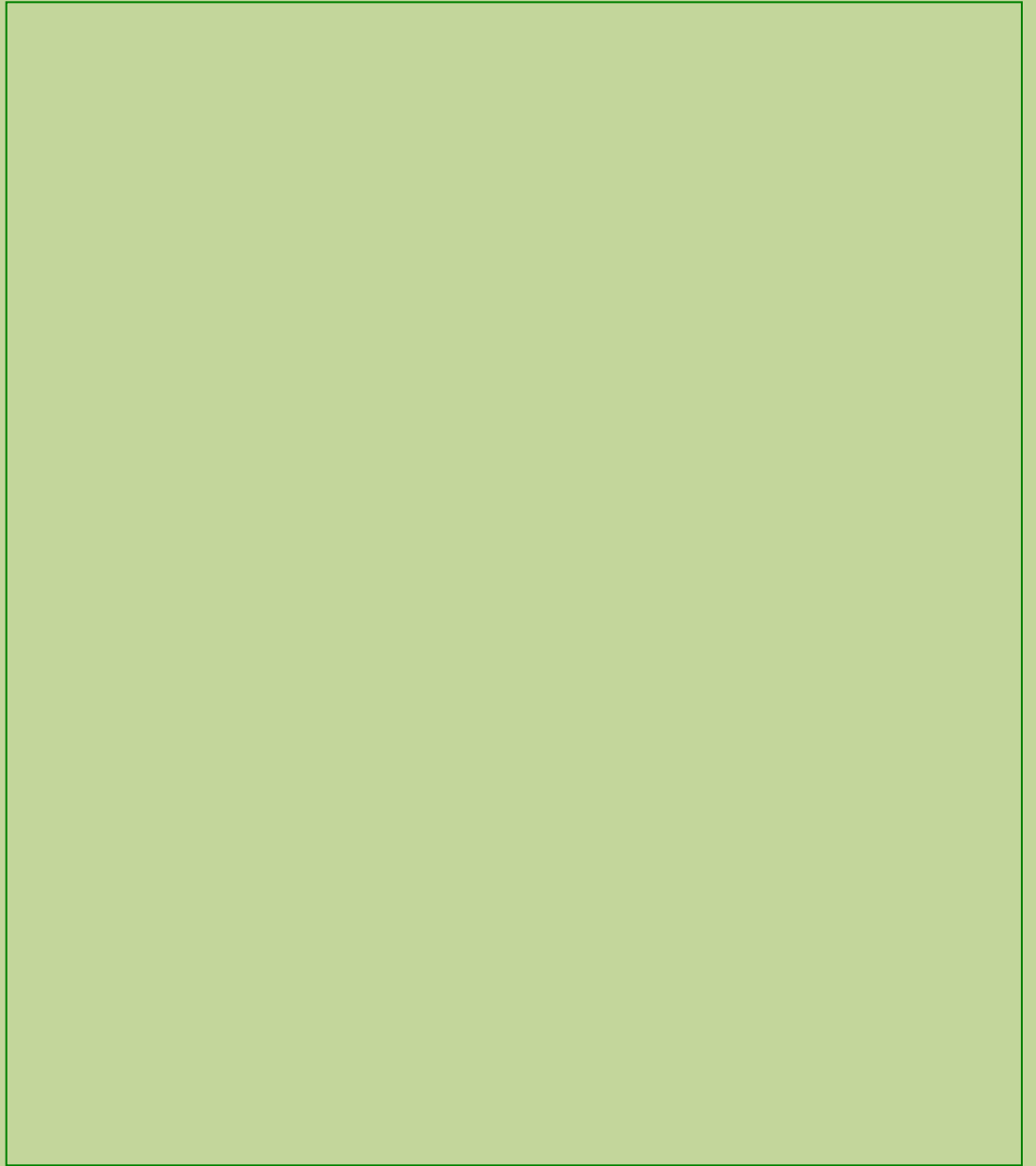
1950s-1960s: Rezoning and large-scale transportation projects split the neighborhood and drastically change landscape.



1970s: Chicano Civil Rights Movement and founding of Chicano Park



*Complications
make it
challenging*



*Complications
make it
challenging*

- Ethnic/Racial makeup of community significantly changed over time

*Complications
make it
challenging*

- Ethnic/Racial makeup of community significantly changed over time
- Development and Redevelopment Have Changed the Landscape

*Complications
make it
challenging*

- Ethnic/Racial makeup of community significantly changed over time
- Development and Redevelopment Have Changed the Landscape
- Necessity of Oral Histories, Community Participation, and Research Outside of Traditional Sources

*Complications
make it
challenging*

- Ethnic/Racial makeup of community significantly changed over time
- Development and Redevelopment Have Changed the Landscape
- Necessity of Oral Histories, Community Participation, and Research Outside of Traditional Sources
- Differing Definitions of What Is/Was Important within the Community

Thinking outside the building

Most buildings failed to be eligible individually or as contributors to a district under conventional application of integrity.

The neighborhood's cultural heritage was far better exemplified in its landscape.

*Historic
Vernacular
Cultural
Landscape*

“A landscape that evolved through use by the people whose activities or occupancy shaped it. Through social or cultural attitudes of an individual, a family, or a community, the landscape reflects the physical, biological, and cultural character of everyday lives.”

National Park Service, *Guidelines for the Treatment of Cultural Landscapes*

Criteria for Eligibility

NRHP Criterion A: Events

NRHP Criterion B: People

NRHP Criterion C: Design

*Character-
Defining
Features*

hide in plain sight

- Planner **James Rojas'** Mexican American Environment of East Los Angeles
 - the people (intangible)
 - the props (tangible)
 - a unique vernacular form (tangible)
- Geographer **Daniel D. Arreola's** Mexican American Housescape
 - fence-enclosed front properties
 - exterior house color
 - front-yard religious shrines
 - murals

Characteristics of
Mexican American barrios are

Rooted in Historic Precedent

but many of the meanings attached to them
are not recognized by the current generation.

Character- Defining Features

Enclosed and personalized front yards

Use of color to fill blank walls

- ◆ bright colors
- ◆ murals
- ◆ advertising
- ◆ graffiti

Religious shrines

Enclosed and personalized front yards

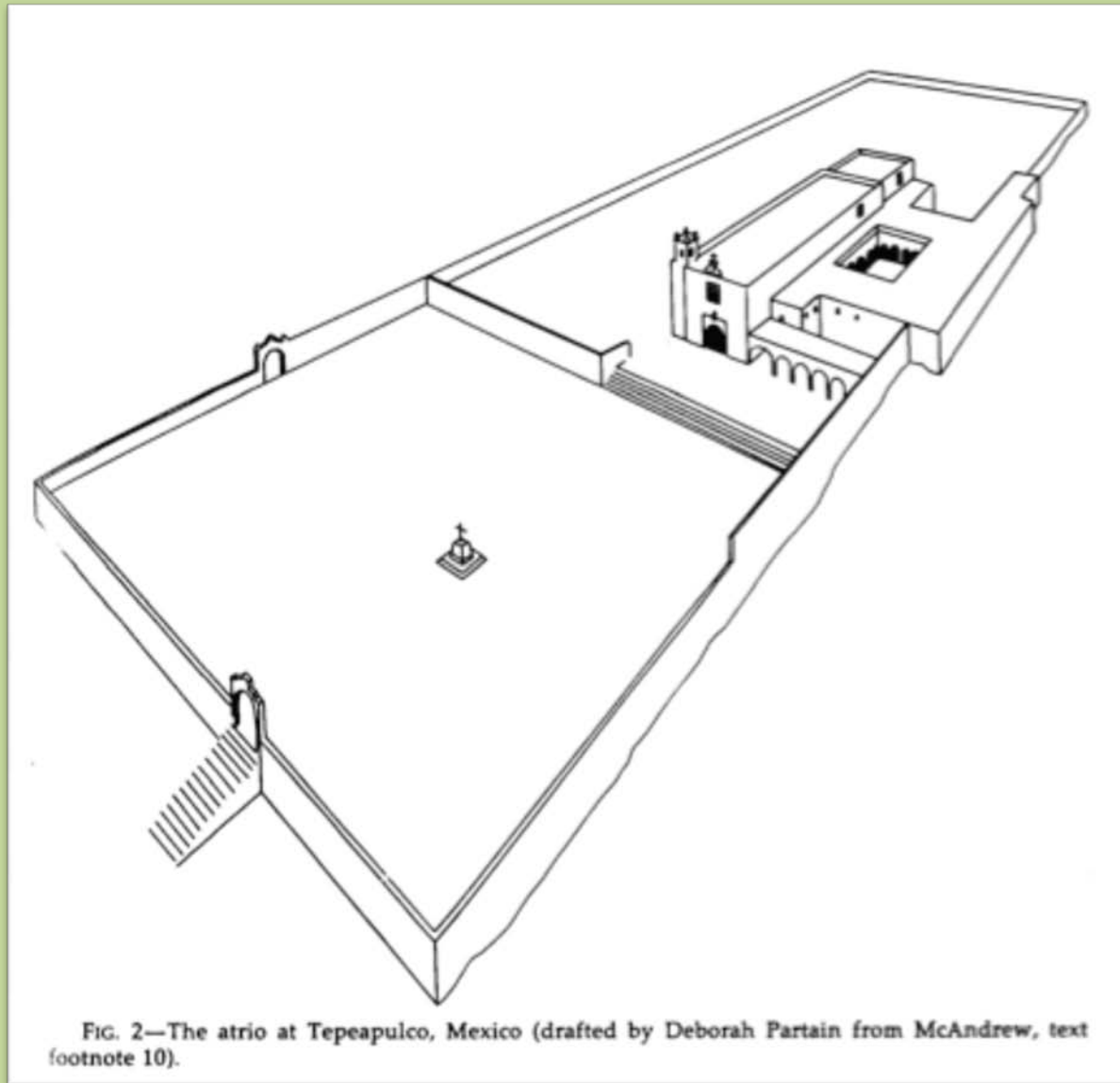


90%

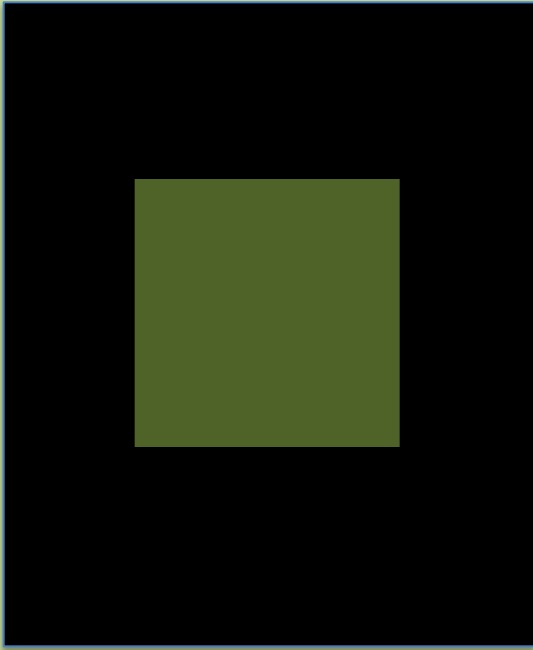


Various fencing materials

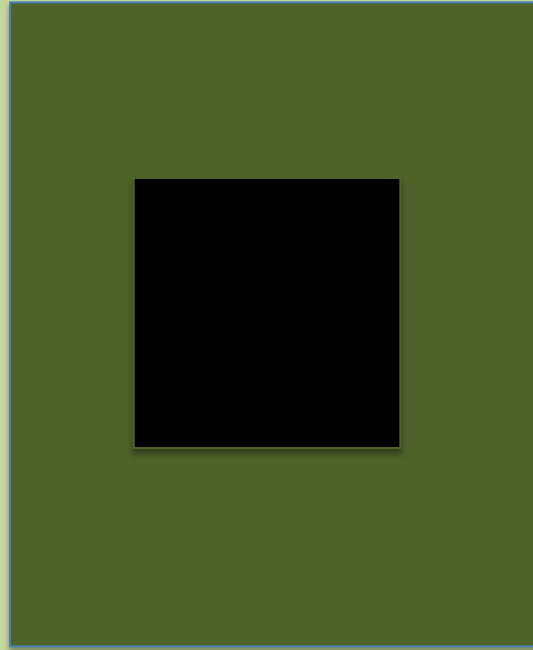




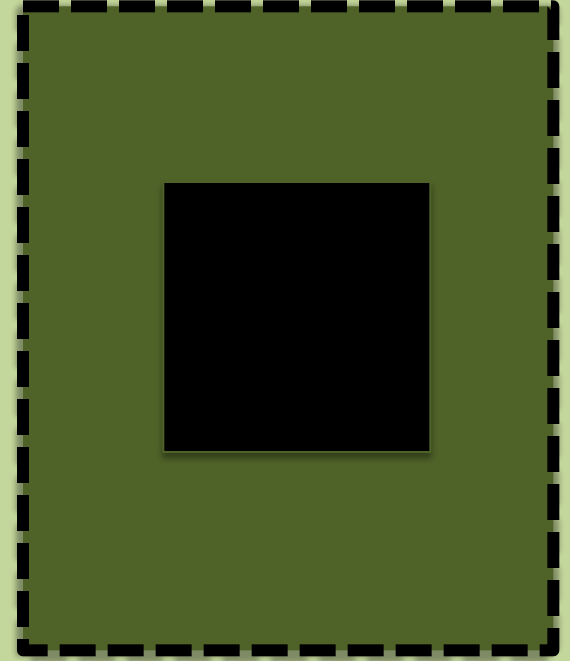
Arreola, Daniel. "Mexican American Housecapes." *The Geographical Review* 78, no. 3 (July 1988):299-315



Mexican



European-
American



Mexican-American

Evolving building traditions

Front yards
tell personal
stories.



Some stories are less pleasant than others.



Use of COLOR to fill blank walls

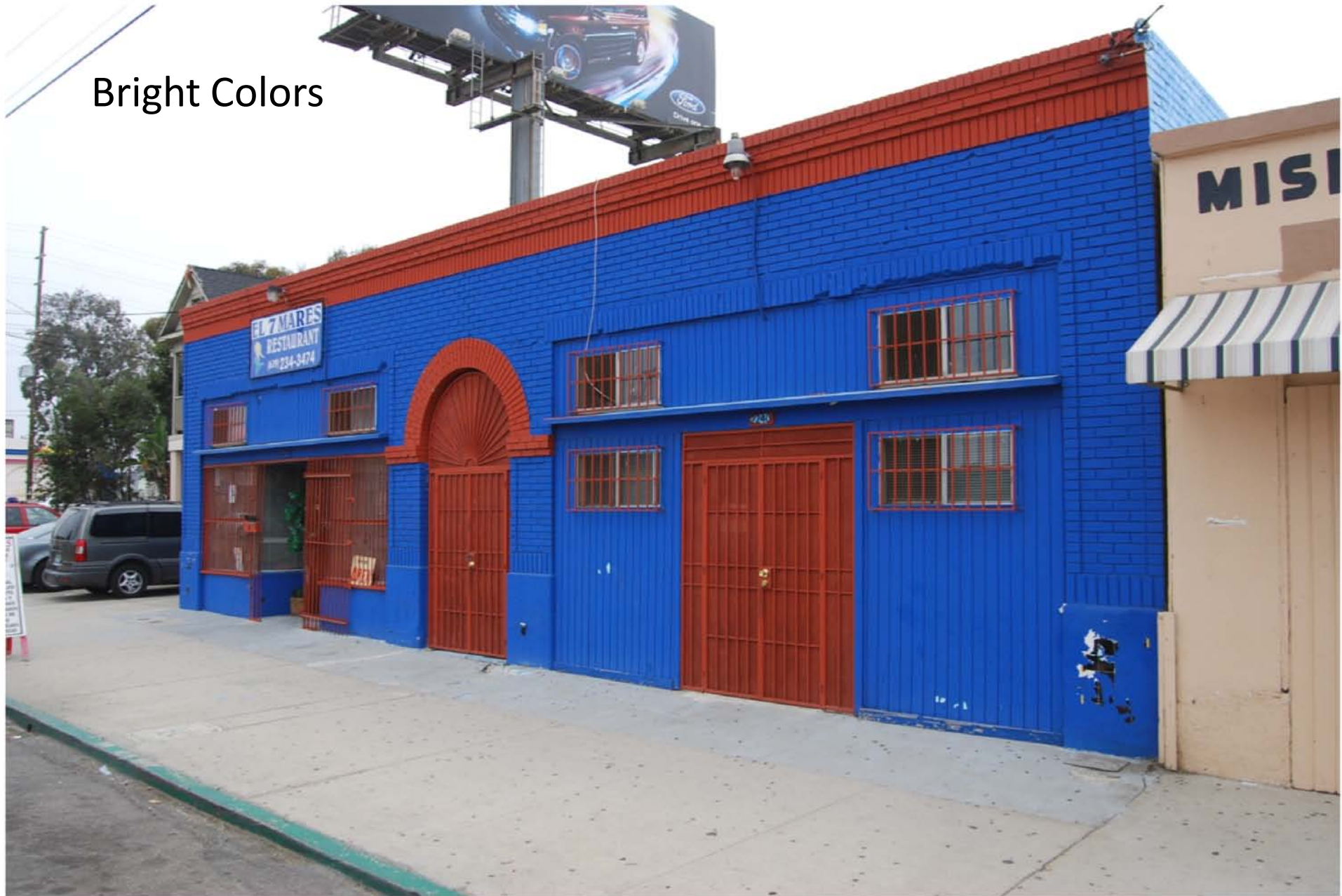


San Bartolo Murals, Guatemala, <http://www.crystalinks.com/mayanarch.html>

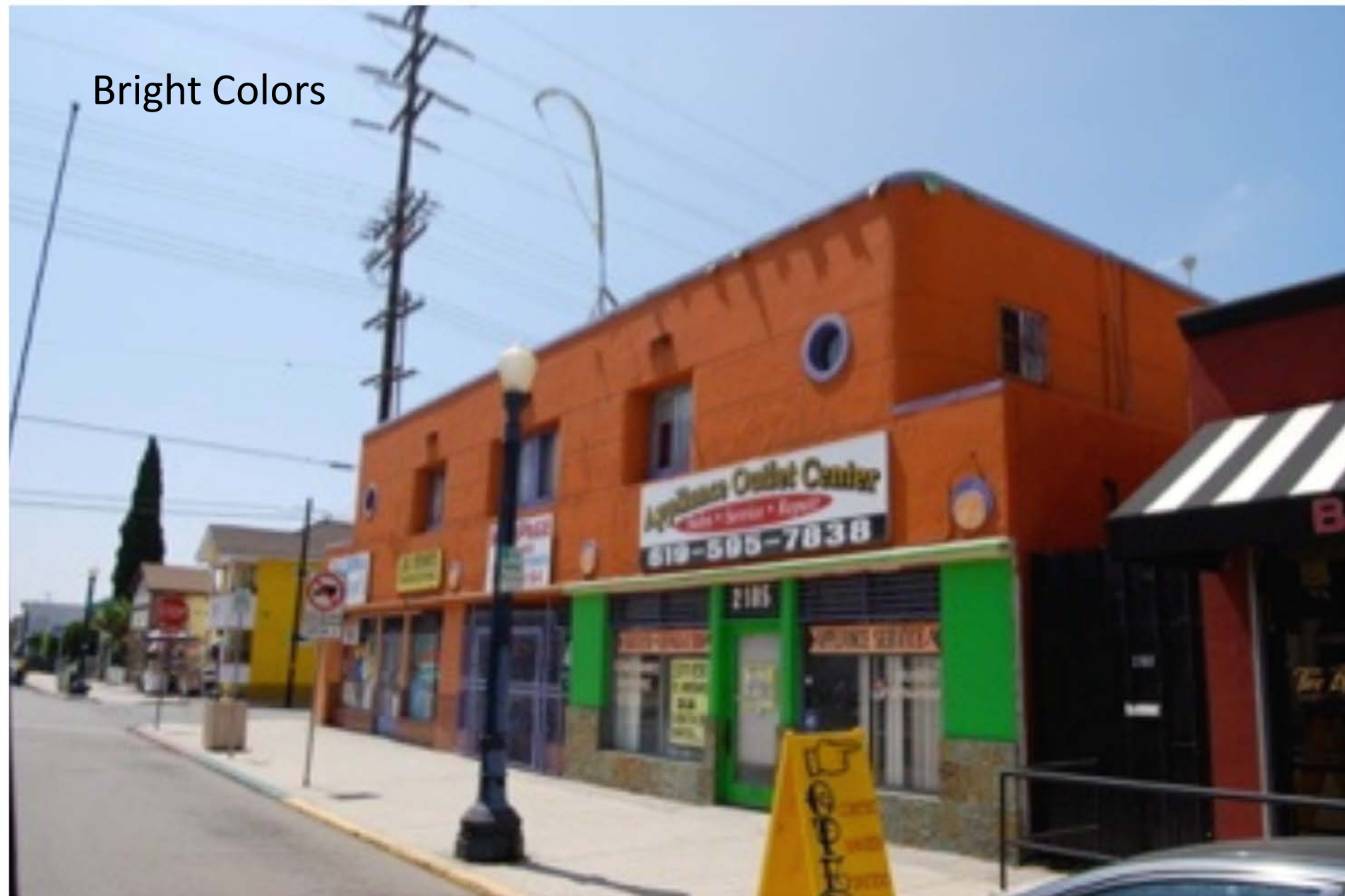
Bright Colors



Bright Colors



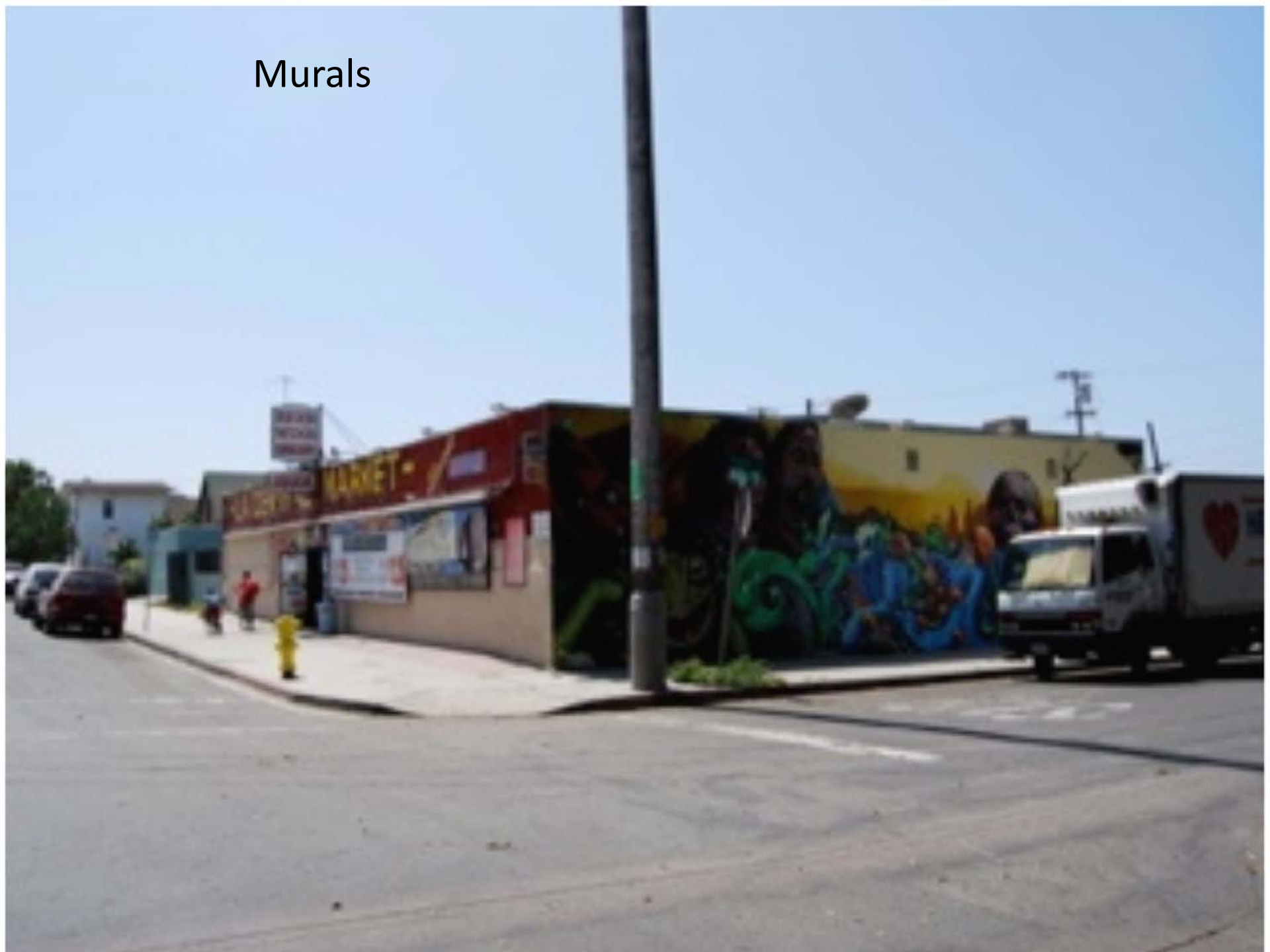
Bright Colors



Bright Colors



Murals



Murals



Murals



Murals





National Register-eligible Chicano Park Murals



Chicano Park Takeover Mural



Chicano Park NASSCO mural

Amontonado (stacking)



El Porvenir

tortillas tamales burritos carnisas Since 1919

ABIERTO LUNES A SABADO
Mas o Menos - 8am hasta 5pm

BREAKFAST BURRITOS \$3.75

1786

BURRITOS
D' CARNITAS
TACOS
CHILES
RELLENOS

TORTILLAS
FLOUR &
CORN
TAMALES
PORK
BEEF

WE'RE
OPEN

1215

Graffiti

BARRIOS UNIDOS

BOBBA

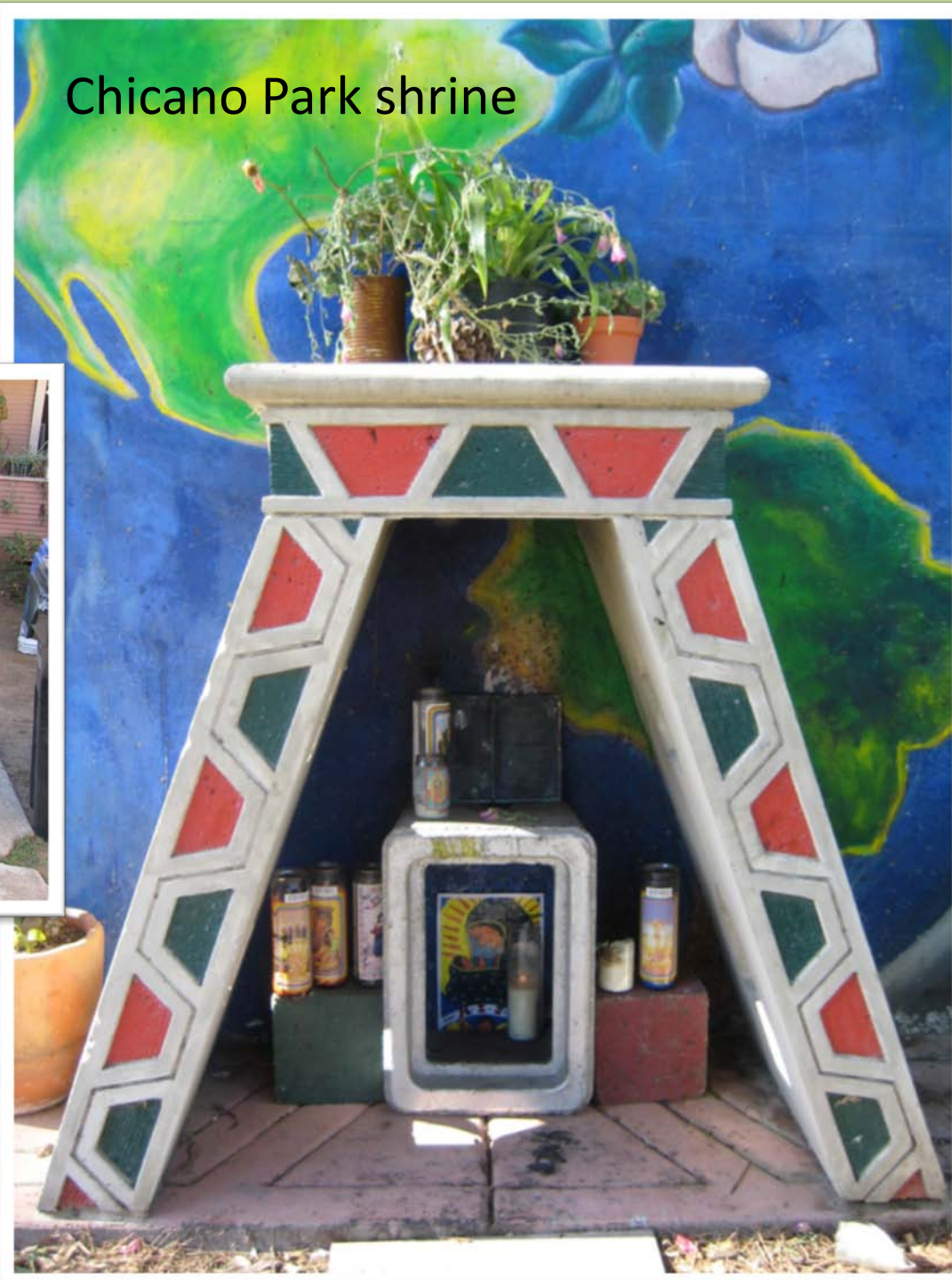


Religious SHRINES



St. Michael (San Miguel), Huejotzingo, Puebla, Mexico, Posa Chapel (www.mexicanarchitecture.org)

Chicano Park shrine



Front yard shrine



Integrity?



Only 3% of National Register-listed resources are associated with diverse communities.

European-Americans represent 64% of our population.

Hispanic population represents 16% of our population (up from 13% in 2000).

Helpful Resources

Arreola, Daniel D. "Mexican American Exterior Murals."
Geographical Review 74, no. 4 (October 1984):409-424.

Arreola, Daniel D. "Mexican American Housescapes."
Geographical Review 78, no. 3 (July 1988):299-315.

Rojas, James Thomas. "The Creation of 'Place' by Mexicans and Mexican-Americans in East Los Angeles." Master's thesis, Department of Urban Studies and Planning, Massachusetts Institute of Technology, Cambridge, 1991.