

United States Department of the Interior  
National Park Service

# National Register of Historic Places Registration Form

This form is for use in nominating or requesting determinations for individual properties and districts. See instructions in National Register Bulletin, *How to Complete the National Register of Historic Places Registration Form*. If any item does not apply to the property being documented, enter "N/A" for "not applicable." For functions, architectural classification, materials, and areas of significance, enter only categories and subcategories from the instructions.

## 1. Name of Property

historic name Edwin L. Smith Building

other names/site number The Big Store On The Corner; Stream's; Gamble's; Bristol's/5HF.331

## 2. Location

street & number 300 South Main Street

N/A	not for publication
	vicinity

city or town La Veta

state CO county Huerfano zip code 81055

## 3. State/Federal Agency Certification

As the designated authority under the National Historic Preservation Act, as amended,  
I hereby certify that this X nomination \_\_\_ request for determination of eligibility meets the documentation standards for registering properties in the National Register of Historic Places and meets the procedural and professional requirements set forth in 36 CFR Part 60.

In my opinion, the property X meets \_\_\_ does not meet the National Register Criteria. I recommend that this property be considered significant at the following level(s) of significance:

    national        statewide      X   local

Shelby K. Norton Deputy State Historic Preservation Officer 2 June 2020  
Signature of certifying official/Title Date

History Colorado  
State or Federal agency/bureau or Tribal Government

In my opinion, the property \_\_\_ meets \_\_\_ does not meet the National Register criteria.

Signature of commenting official Date

Title State or Federal agency/bureau or Tribal Government

## 4. National Park Service Certification

I hereby certify that this property is:

- entered in the National Register
- determined eligible for the National Register
- determined not eligible for the National Register
- removed from the National Register
- other (explain:)

Signature of the Keeper Date of Action

Smith, Edwin L., Building  
Name of Property

Huerfano CO  
County and State

**5. Classification**

**Ownership of Property**  
(Check as many boxes as apply.)

**Category of Property**  
(Check only **one** box.)

**Number of Resources within Property**  
(Do not include previously listed resources in the count.)

- private
- public - Local
- public - State
- public - Federal

- building(s)
- district
- site
- structure
- object

Contributing	Noncontributing	
1		buildings
		sites
		structures
		objects
1	0	<b>Total</b>

**Name of related multiple property listing**  
(Enter "N/A" if property is not part of a multiple property listing)

**Number of contributing resources previously listed in the National Register**

N/A

N/A

**6. Function or Use**

**Historic Functions**  
(Enter categories from instructions.)

**Current Functions**  
(Enter categories from instructions.)

COMMERCE/department store  
\_\_\_\_\_  
\_\_\_\_\_  
\_\_\_\_\_  
\_\_\_\_\_  
\_\_\_\_\_

COMMERCE/specialty store  
\_\_\_\_\_  
\_\_\_\_\_  
\_\_\_\_\_  
\_\_\_\_\_  
\_\_\_\_\_

**7. Description**

**Architectural Classification**  
(Enter categories from instructions.)

**Materials**  
(Enter categories from instructions.)

LATE VICTORIAN/Italianate  
\_\_\_\_\_  
\_\_\_\_\_  
\_\_\_\_\_  
\_\_\_\_\_

Foundation: Concrete  
Walls: Sandstone  
\_\_\_\_\_  
Roof: Asphalt  
Other: Tin  
\_\_\_\_\_

**Narrative Description**

Smith, Edwin L., Building  
Name of Property

Huerfano CO  
County and State

(Describe the historic and current physical appearance of the property. Explain contributing and noncontributing resources if necessary. Begin with a **summary paragraph** that briefly describes the general characteristics of the property, such as its location, setting, size, and significant features.)

### Summary Paragraph

The Edwin L. Smith Building was constructed of sandstone in 1911 as a large general store on a prominent corner of what became Main Street in La Veta, a rural ranching town in the Cucharas River Valley of South Central Colorado. The Edwin L. Smith Building represents a vernacular style of late-nineteenth and early-twentieth century American storefronts with Italianate detailing. Significant character-defining features include the east and north storefront facades with parapets, cornices, corbels, braces, faux stone, and pressed tin sheathing above large plate glass display windows. The masonry work is particularly associated with La Veta where locally quarried sandstone was readily available. The Edwin L. Smith Building is the largest of the historic commercial stone buildings on Main Street, and is locally listed as a contributing resource of the La Veta Historic District (site inventory number 5HF.331). The nominated property's significance is enhanced by its historic integrity, retaining with minor alterations its original design features, materials, character, location, setting and feeling. It is significantly associated with the commercial and architectural development of the Town of La Veta, CO, during the period of significance from 1911-1970.

---

### Narrative Description

#### General Description

The Edwin L. Smith Building is a large rectangular sandstone building occupying the southwest corner of the intersection of West Francisco and South Main streets in La Veta, a one-mile square town of approximately 700 residents on the Cucharas River in Huerfano County, Colorado. Main Street is a paved, mile-long portion of Colorado Highway 12 oriented north south through town. The highway is a designated Colorado Scenic Byway known as The Highway of Legends. Main Street is the major thoroughfare and business area in La Veta, intersecting Francisco Street midway along its route through town. Francisco Street is a mostly residential east-west, two-lane gravel road, but paved at its intersection with Main Street. The Spanish Peaks loom large to the south and are visible from the intersection. To the west are the eastern foothills and peaks of the Sangre de Cristo Range of the Rocky Mountains. Due north, Green Horn Mountain dominates the horizon rising above the Eastern Plains of Colorado.

The east façade of the Edwin L. Smith building is along 50' of South Main Street, and the north side along 100' of West Francisco Street (see Figure 2). It is directly abutted at the base of its east- and north-facing facades by eight-foot wide concrete sidewalks. Unlike any other commercial building in La Veta, the main entrance of the Smith Building faces a corner (see Figure 3). On the same block of West Francisco Street is the original La Veta Firehouse and Town Hall (5HF.519) built of sandstone in 1912 (see Figures 5, 6, 7). Immediately south and adjacent to the southwest corner of the Edwin L. Smith Building is the Francisco Plaza/ Fort Francisco Museum (5HF.519; NRIS. 86002950). Francisco Plaza was constructed of adobe mud bricks surrounding a plaza starting in 1862, and was listed on the National Register of Historic Places in 1986.<sup>1</sup> A fifty-foot wide grass lawn bordering the Smith Building along its 100' south-facing stone wall is the entrance to Fort Francisco and Plaza from South Main Street (Figure 3). The La Veta Public Library is located south of the grass lawn in the Bissell Building built in the 1870s, moved to its present location by Smith in 1908, and where he once resided and operated a market (see Figure 6).<sup>2</sup> Across South Main Street to the east is the Spanish Peaks Baptist Church (5HF.253) built in 1877. Directly east of the Smith Building is the site of a former boarding house constructed in the early 1910s, and former gas filling station constructed in the 1940s, now occupied by Paradise Coffee. On the northeast corner of the intersection and diagonal to the Smith Building is a paved parking lot, residence/business, and The Cheese Factory (5HF.2624) built in 1927, occupied today by La Veta Village, a proposed assisted-living facility. On the northwest corner of the intersection is the historic La Veta State Bank Building (5HF.335) constructed of sandstone in 1907 (see Figures 5, 6, 7). Today it is occupied by Bachman Realtors. On street parking and pedestrian access to walkways surrounding the Smith Building storefronts are available today as they were in 1911.

#### **Edwin L. Smith Building, 1911**

The Edwin L. Smith Building is located at 300 South Main St. on the southwest corner of the intersection of West Francisco and South Main Street in the Town of La Veta, CO (see Figure 1). It is designated site 5HF.331 in the La Veta

---

<sup>1</sup> Nancy C. Christofferson, *La Veta, The First Forty Years*, (La Veta: self-published, 2001).

<sup>2</sup> La Veta Advertiser, 21 March 1908.; Christofferson, *La Veta, The First Forty Years*.

Smith, Edwin L., Building

Name of Property

Huerfano CO

County and State

Historic Preservation District (see Figure 1), and occupies the east portion of lots 19 and 20, Block 7, La Veta, CO (see Figure 2). The building resides at its original location. The property is a rectangular single-story, one-part block commercial sandstone building 100' x 50' in dimension with a concrete foundation directly supporting sandstone walls (see Figure 3). A 3' parapet on the north, east and south-facing sides is topped by concrete coping; the west wall (rear) has no parapet. Bays of display windows, single-light glass transoms, decorative pressed tin entablatures, and an angled corner entrance with a recessed entryway form the east and north-facing storefront (see Photo 1).

## **Exterior**

### *Foundation*

The foundation appears to be entirely concrete, though no invasive exterior investigation was performed to determine the type of foundation constructed in 1911. Investigation of the crawl space also suggests concrete was used for the entire foundation supporting the masonry walls and storefront. Concrete-making equipment was available in La Veta in 1911. The storefront window frames are supported on 2' X 3' X 1' sandstone blocks on concrete footers visible from the crawl space. The top of foundation concrete is visible on the north-facing front; lighter, cream-colored flagstones versus original pink-hued sandstone suggests later replacement repair of several lower stone courses (see Photo 2). The east storefront has a concrete foundation cap cover installed covering the existing foundation beneath (see Photo 3). The foundation is not visible on the south- and west-facing exteriors.

### *Masonry*

The building is constructed of approximately 30 6" tall courses of 18" wide sandstone blocks of medium hardness. It displays a higher degree of finish on the more exposed north-facing side using quarry-faced coursed ashlar sandstone blocks. The south-facing side utilizes a squared rubble sandstone course. The east-facing side has no exposed exterior stone masonry. The west-facing side is squared rubble sandstone, though covered by an attached building on the north half and a shed roof on the south half limits exposure. Many of the masonry joints have been repointed with a Portland cement mortar that is lighter in color than the original mortar (see Photo 4). The original masonry mortar is still in place beneath the current repointed exterior surface mortar.

### *North-facing side*

The north-facing side of the building on West Francisco Street is a stone wall rising 20' above ground level (see Photo 5). Attached to the north façade at the west end is a concrete block building constructed by Edwin L. Smith in 1913, now housing La Veta Liquors. The north façade has a historic single window-paned doorway with transom, a one-over-one ½" thick single-pane sash window on the east end, and two 2' x 3' ½" single-pane fixed light windows approximately 10' above the sidewalk 75' and 100' from the west corner; it is otherwise devoid of ornamentation. A single contemporary electrical wire conduit and electric meter are situated at the northwest corner. The north-facing portion of the storefront is situated along the east 20' of the building's north side and includes four bays with single-light windows surmounted by single-light transoms. The pressed tin entablature extends above the transoms to the top of the parapet. The storefront entablature is thought to be original to the 1911 building though the earliest known photograph showing the storefronts is dated from the 1920s (see Photo 6). Storefront and entablature are described in detail below.

### *Northeast entrance*

The main storefront entrance is set within a recessed entryway at the northeast corner of the building (see Photo 7). The recessed entryway is considered original in its design and layout (see Photo 6). A wood-frame screen door and single-light window wood frame entry door are recessed 4' from the building corner. The date of these doors is unknown, though they are not contemporary and most likely date to the period of significance. Description of the main storefront entrance is detailed below.

### *East-facing side*

The storefront extends across the entire east-facing side of the building, wraps around the northeast corner, and then across the eastern quarter of the north-facing side (see Photo 8). The storefront consists of eight bays across the east side and four bays on the north side. Bays on the south end of the east-facing side contain double wood-framed two light window doors flush with the storefront. These doors are not original to the building, and the entrance has been modified from its original recessed design. The bottom portion is mortar impressed with a diamond pattern covering sandstone foundation blocks exposed on the interior. The historic display windows are single-light fixed windows in wood frames that provide substantial lighting to the interior space. The date of the single pane display windows and wood framing is unknown, though photographs from the 1920s show that the present mid-unit vertical bracing was absent, and window lights in the bays appear twice as large as at present (see Photo 6). The storefront display glazing was at one point composed of large single piece glass that spanned the width of two current storefront panels. There is reference to severe

Smith, Edwin L., Building

Name of Property

Huerfano CO

County and State

winds and snow blowing and breaking the large glass pane of one of the windows.<sup>3</sup> At some later date, all bottom window glazing was subdivided to match the transom clerestory glazing above. The wood sill on which the system bears has been paint-protected numerous times. A single course of 2' X 3' X 1' sandstone blocks resting on concrete support the wooden frames of the 6' X 4' storefront windows. Wood-frame, single-light clerestory transoms are located above the display windows.

The ornamental detailing in the entablature is divided into three distinct horizontal bands. Pressed tin panels designed to resemble quarry-faced ashlar cover the storefront above the transoms. The storefront is topped with a prominent, projecting cornice featuring brackets and a shell design. Above the storefront windows on the east side, the angled northeast corner, and the north side storefront is clad with a horizontal wooden band and ornamental tin sheeting. The ornamental tin is likely original to the building and has not been knowingly altered other than by painting. The tin has gone through several iterations of colors and patterns from very ornate to plain solid white. The earliest known black and white photograph suggests a vivid pallet of color accentuating the pressed ornament detailing (see Photo 6, 9, 10). At the top of the storefront glazing system is the architrave, which consists of a horizontal continuous band of wood capped with a small crown mold. Then there is another horizontal band of wood protruding past the crown mold with a wood drip edge on top. On top of the drip edge is the frieze segment that consists of pressed metal ornamental sheets that replicate six courses of regular cut ashlar stone blocks. On top of the frieze is the cornice section, which is the most ornate and complex of the three (see Photo 11). Beginning at the bottom are the vertical triglyphs that are located directly under the modillion brackets. The triglyphs have a flower design stamp impressed on each one. In the space between two triglyphs is the metope, which has an impressed fan palmetto design. On the top of the vertical triglyphs are the modillion scrolled brackets that support the corona and finally culminate at the very top with the cymatium (see Photo 12). Capping the ends of the horizontal cornice sections are triangular brackets with a finial ball cap on top (see Photo 13). Three of the five finial ball caps are missing the ball.

#### *South-facing side*

The south-facing stone wall rises 20' above a grass lawn and is without ornamentation or fenestration (see Photo 14). This wall is directly north of the La Veta Public Library and runs west to the entrance of the Francisco Plaza/Fort.

#### *West-facing side (rear)*

The west-facing stone wall rises 18' above ground level, is without stone parapet, and is attached to a concrete building on the north half and has a doorway covered by slanted shed roof attached to the south half (see Photo 15).

#### *Roof.*

The flat roof is not visible from the street. A 3' tall sandstone parapet surrounds the roof on the north-, east- and south-facing sides (see Photo 16). The parapet does not extend across the west-facing (rear) wall. The stone parapet exposed on the north-, east- and south-facing exterior facades are finished with concrete stucco on all interior parapet walls and top surfaces. The existing roof surface was installed within the last ten years. The roof slopes downwards from north to south providing drainage. The roof water drainage is captured by a gutter system and downspout that drains to the southwest corner of the building.

#### *Interior*

*Main Entrance, retail space and bar.* This area occupies the northeast quadrant of the building's interior. The main entrance to the interior is the recessed entryway on the northeast corner (see Photo 17). Display windows of the storefront illuminate this area. The flooring in this area and throughout the building is contemporary plywood sealed with waterproof paint. Massive 2' X 3' X 1' sandstone blocks support the display window frames (see Photo 18). Flooring abuts the interior edge of the foundation stones. French glass paneled doors allow entry through the partition to the south and west interiors of the building (see Photo 19). The present tin ceiling throughout the interior was likely installed in 1927 according to published reports, though this is not certain. The tin ceiling is approximately 15' above the plywood floor throughout the building. The interior walls are covered by 3" thick plaster over stone.

*Art gallery, performance space, stage, bathrooms and storage closets.* Currently a floor-to-ceiling partition that divides the northeast quarter of the building from the remaining space occupied by an art gallery (southeast quarter), performance space and stage (north wall), bathrooms (south wall), and storage closets (west wall) (see Photo 20). A double doorway on the east storefront that was originally recessed is now double doors flush with the exterior storefront that allows entry from the sidewalk to this space. A 40' X 10' stage rising 3' above the floor was built next to the north wall in 2014 (see

<sup>3</sup> *La Veta Advertiser*, 15 April 1921.

Smith, Edwin L., Building

Name of Property

Huerfano CO

County and State

Photo 21). Two contemporary bathrooms with shower stalls on the south wall and storage closets next to the west wall were rehabilitated during a 2014 interior renovation (see Photo 22).

### Alterations

From its construction in 1911 until the early 1970s, the Edwin L. Smith Building exterior remained largely unchanged except for signage and painting according to historic photographs. Conditions and arrangement of the interior changed during that time based upon usage, although the interior remains virtually a big box. In 1973, Jack Hall purchased the building, renovated it, and called it Valley Hardware. In 1977, Lewis Hastings and Mars Combes purchased the building from Hall, and continued Valley Hardware until 1992. The building was vacant from 1992 until 2002 when Denny and J Patterson renovated the interior into a health center complete with an indoor wave pool. In 2012, the building was purchased by Lance Freeman and Cynthia Bailey; all health equipment and the wave pool were removed and a partition was built once again dividing the north from the south sides. The north side became a restaurant called the Outpost, and the south was a community gathering and performance space called Francisco Crossing.<sup>4</sup> In 2014, Tom Doerk purchased the building and continued Francisco Crossing, utilizing it as a place for public and community gatherings; the northeast quadrant was occupied by The Silk Road, a consignment shop. In 2017, the building was purchased by Emile' Dubia, the current owner, and renamed La Veta Mercantile. The interior was renovated in 2018 adding ductwork and air conditioning, and new plywood flooring.<sup>5</sup>

*Exterior.* The building exterior appears minimally altered, but no historic photographs of the original 1911 storefront configuration have been located, so it is impossible to know for certain. A panoramic black and white photograph taken in the 1920s indicates the present storefront configuration essentially unchanged from that time other than signage, paint colors, conversion of the originally recessed southeast entrance to a flush storefront doorway, and mid-unit transection and vertical bracing of the original east-facing and north-facing storefront windows (see Photos 23, 24). A photo from 1946 shows that the entrance on the southeast storefront was recessed (see Photo 25). The status of the southeast doorway configuration is unclear in photos taken of the northeast corner in 1969 (see Photo 26) and the early 1970s (see Photo 27). However, a photo taken in January, 1973 of Main Street facing north indicates clearly that the southeast doorway of the Smith Building was converted from a recessed entrance to a flush entrance (see Photo 28). A contemporary photo taken in 2020 indicates that the appearance of the southeast entrance is much as it was in 1973, though the doorway now is double, not single doors (see Photo 29). A photo taken in 1980 suggests the southeast doorway was single (see Photo 30); when the doorway was converted to double doors is unknown, but occurred after 1980. Photographs illustrating the historical appearance and progression of the Smith Building from the 1920s to the present indicate a high degree of historic integrity. Alterations to the storefront have slightly affected the integrity of design and materials, but these alterations have small impact on the overall historic character of the storefront.

*Interior.* The interior of the Edwin L. Smith Building has undergone numerous undocumented renovations over its 109 year history. Historic photographs of the interior have not been located. A fire in 1937 was reported to have caused damage to the interior, but the extent of the damage is not documented other than the store was closed by the owner for 6 weeks while repairs were made; there is no obvious evidence of damage from this fire. A partition dividing the south and north interior sides of the building was present by 1912, but was removed and replaced over the years as usage in the building changed (see Figure 5). It is documented that the building from 1912-1913 was partitioned into north and south areas, and that the Photoplay Theater, a silent-movie house, occupied a 15' X 65' rectangular area south of the partition (see Figure 5).<sup>6</sup> The movie theater had its own entrance, which is maintained as the southeast doorway on the east side storefront, though altered from a recessed entranceway to flat and flush with the exterior. The doorway was also converted from single to double doors at some point after 1973. Date of the single-light door at the main entrance is unknown, though it is not contemporary; it is protected by a screen door of unknown age. Smith's general store occupied the remaining areas of the interior (see Figure 5). By 1930, the partition was absent and the entire interior was utilized by Smith and E. C Stream as a general store and grocery market (see Figure 6). Exactly when indoor plumbing and bathrooms were added is unknown. A drop ceiling was added at some point, but the original pressed tin ceiling is now exposed. These features have not been substantially altered. A few tin ceiling panels have been replaced by historically accurate patterned panels when possible to repair water damage due to roof leakage.<sup>7</sup> The age and originality of the interior wall plastering is unknown but is 3" thick where stone wall is exposed. Present interior space, doorway sites, main recessed corner entrance, and display windows likely appear much as they were when the building opened in 1911,

<sup>4</sup> La Veta Public Library Historical Archives, Property and Historic Photograph Files, La Veta, Colorado.

<sup>5</sup> Emile Dubia (Owner) in discussion with preparer, January 2020.

<sup>6</sup> *La Veta Advertiser*, 5 January 1912; 3 October 1913; 8 October 1937; 19 November 1937.

<sup>7</sup> Emile Dubia (Owner) in discussion with preparer, January 2020.

Smith, Edwin L., Building

Name of Property

Huerfano CO

County and State

though this cannot be confirmed through documentation. The flooring is supported by stone pier and fir beam construction visible in the crawl space. Air-conditioning ductwork and central air-conditioning were added by the current owner in 2016; prior to that conversion, the building was not centrally air-conditioned. Electrical lighting and outlets are contemporary; configuration of historical electrical lighting and outlets are unknown, though the building was likely opened in 1911 with locally generated electricity as was the adjacent Bissell Building. The interior of the building was rehabilitated in 2014 by the addition of contemporary bathrooms on the southwest side, a stage on the west end and removal of the west half of the partition.<sup>8</sup>

## Integrity

The Edwin L. Smith Building retains a high level of historic integrity through preservation of both physical and environmental characteristics relevant to its period of significance. Evidence of the Smith Building's historic identity includes its original street corner location and setting that is remarkably similar to 1911. Wood frame buildings located adjacent to the south wall of the Edwin L. Smith Building when constructed in 1911 were demolished sometime after 1930. However, the Bissell Building—currently the La Veta Public Library—moved by Smith in 1908 to its present site across a grass lawn to the south is still present. Directly east from the Bissell Building across Main Street is the Spanish Peaks Baptist Church built in 1877. The proximity and original location of the church indicates Main Street has not undergone substantial alteration since 1911 when the Edwin L. Smith Building was constructed. Indeed, the location of the La Veta Bank Building built in 1908 directly north across Francisco Street, and the presence of historic buildings still attached to the west end of the Edwin L. Smith Building indicate the setting has changed very little since the period of significance. The intact presence of Fort Francisco built in 1862 immediately to the west also demonstrates the historic integrity of the Edwin L. Smith Building's setting.

The building's original exterior design is uncompromised by additions. Minor changes to display windows and the southeast doorway are the primary design alterations. The historic materials and design used for the tin entablature above the display windows are intact, as are the other materials used for the storefront and stone walls. Extensive mortar repointing has been made over the years, but does not detract from the overall feeling of the building. Workmanship of both the masonry and the storefront tin entablature exemplifies the quality of the commercial storefront style in 1911. The integrity of the building's interior is apparent because the interior wall configuration has always paralleled that of the exterior walls with dividing walls and partitions coming and going over the years; the interior of the building is essentially one large 50' x 150' space historically divided as needed by wall partitions. The present interior feeling is much like it would have been during its period of significance when occupied by other general stores.

In summary, the Edwin L. Smith Building is significantly associated with both commercial and architectural development in La Veta during its period of significance. The exterior and interior of the building is essentially unchanged from its original design and appearance, maintaining an association with the streetscape setting that would be recognizable to the 1911 visitor. During the period of significance from 1911-1970, the setting changed very little in the immediate vicinity of the building. Although a few historic buildings have been demolished along Main Street in La Veta since that time, the historic design, setting, and feeling associated with the Edwin L. Smith Building's remain remarkably intact.

---

<sup>8</sup> *La Veta Advertiser*, 13 June 1908.; Emile Dubia (Owner) in discussion with preparer, January 2020.

Smith, Edwin L., Building  
Name of Property

Huerfano CO  
County and State

**8. Statement of Significance**

**Applicable National Register Criteria**

(Mark "x" in one or more boxes for the criteria qualifying the property for National Register listing.)

- A Property is associated with events that have made a significant contribution to the broad patterns of our history.
- B Property is associated with the lives of persons significant in our past.
- C Property embodies the distinctive characteristics of a type, period, or method of construction or represents the work of a master, or possesses high artistic values, or represents a significant and distinguishable entity whose components lack individual distinction.
- D Property has yielded, or is likely to yield, information important in prehistory or history.

**Criteria Considerations**

(Mark "x" in all the boxes that apply.)

Property is:

- A Owned by a religious institution or used for religious purposes.
- B removed from its original location.
- C a birthplace or grave.
- D a cemetery.
- E a reconstructed building, object, or structure.
- F a commemorative property.
- G less than 50 years old or achieving significance within the past 50 years.

**Areas of Significance**

(Enter categories from instructions.)

ARCHITECTURE

COMMERCE

**Period of Significance**

1911-1970

**Significant Dates**

1911

**Significant Person**

(Complete only if Criterion B is marked above.)

N/A

**Cultural Affiliation**

N/A

**Architect/Builder**

Coleman, Edward R.

Coleman, Elmer E.



Smith, Edwin L., Building  
Name of Property

Huerfano CO  
County and State

**Statement of Significance Summary Paragraph** (Provide a summary paragraph that includes level of significance, applicable criteria, areas of significance, justification for the period of significance, and any applicable criteria considerations.)

The Edwin L. Smith Building is significant under Criterion A for Commerce as one of the most prominent commercial buildings on La Veta's Main Street with continuous documented function as a commercial property to the present. The building is also significant under Criterion C for Architecture as an excellent example of locally quarried sandstone commercial building with Italianate detailing. The building was constructed by local stonemasons Edward R. and Elmer E. Coleman, two brothers who were responsible for many of La Veta's historic stone buildings.<sup>9</sup> The Smith Building constructed 1911 is representative of the late-nineteenth and early-twentieth century commercial architecture with large display windows and Italianate detailing.

The period of significance for the Edwin L. Smith Building is 1911-1970. It was during these years that the building was constructed, occupied first by owner E. L. Smith, and then in partnership with E. C. Stream in 1920. It attained its prominence as "The Big Store on the Corner" and "the place to trade," (see Photo 23) as it was known by locals who shopped there. It became Stream's in 1935 upon the death of Smith; by this time its reputation as a provider of goods to the community was firmly established. During the period of significance, the notion of a large department store such as Smith and Stream's where all manner of dry goods, hardware items, clothing, pianos, furniture, rugs, groceries and numerable other notions could be purchased became acceptable to the public. The Edwin L. Smith Building, on its prominent street corner, continued to house a general store known first as Gamble's and then Bristol's through its ownership by Vern and Marie Bristol who bought the building from Stream in 1945. Bristol descendants continued operation of Bristol's as a general store through 1970. The period of significance begins in 1911 with the construction of the building, and because of its continued commercial use over time only ends 1970, fifty years before listing as per the guidelines of the National Register.<sup>10</sup>

---

**Narrative Statement of Significance** (Provide at least one paragraph for each area of significance.)

The Edwin L. Smith Building sits today on a site that shares historic significance with the earliest days of the town of La Veta and with the commercial and architectural development of twentieth century Colorado. The Smith building is significant for its role in the development of the central business zone encompassed by the Town of La Veta since its incorporation in 1876. The building and its owners provided items of necessity to the local citizenry beginning in 1911. The earlier commercial center of La Veta was the Francisco Plaza. What had started as an adobe fort and plaza surrounded by a wooden palisade providing protection and trade opportunities was by 1911 a solid community of homes and businesses, a fire station, jail, bank and school serving more than 800 individuals. The Smith Building significantly contributed to the commercial success of La Veta by becoming the prototype department store in the town of the where all necessities could be obtained in one large building easily accessible by sidewalk, horse, wagon, or automobile.

### **Criterion A - COMMERCE**

Euro-American settlement in the area began in 1843 when Ceran St. Vrain and Cornelio Vigil received a land grant from the governor of New Mexico that included the valley of the Cucharas River. John M. Francisco from Virginia settled on the Vigil-Vrain Land Grant and by 1861 sent livestock to what became the Town of La Veta. Henry Daigre formed a partnership with Francisco and provided seeds, oxen and tools to local residents in 1862. Francisco and Daigre began construction of Francisco Fort and Plaza about this time on level land in a bend of the Cucharas River that would eventually include the site of the Edwin L. Smith Building. Francisco Plaza initially offered protection from Utes who resented the presence of the farmers, ranchers and traders. Francisco and Daigre, with newcomer Hiram Vasquez, built the Francisco Fort Plaza during 1862 and 1863 to supply trading posts and mining camps with local products. The Fort was built from hand-made mud adobe bricks (see Photos 31, 32) and is preserved today as a building listed on the National Register of Historic Places housing the Francisco Fort Museum along with several historic buildings moved to this site (see Photo 33). The land parcels comprising Fort Francisco (see Photo 34), and where the Edwin L. Smith

---

<sup>9</sup> La Veta Public Library Historical Archives, Property and Historic Photograph Files.

<sup>10</sup> *La Veta Advertiser*, 5 April 1912; 10 July 1935; 16 November 1945; 7 December 1945.; La Veta Public Library Historical Archives, Property and Historic Photograph Files.

Smith, Edwin L., Building

Name of Property

Huerfano CO

County and State

Building was eventually constructed in 1911, were host to various commercial enterprises built of adobe and wood frame over the intervening years.<sup>11</sup>

In 1876, a narrow gauge railroad spur of the Denver and Rio Grande (D&RG) Railroad was built through the property later labeled on plats as Lots 19 and 20, Block 7 of the incorporated Town of La Veta where the Edwin L. Smith Building was constructed. When the railroad reached La Veta in 1876, it brought new opportunities and people to town. Skilled craftsmen, merchants, doctors, miners and prospectors built stores, restaurants, saloons, hotels, and new homes. Construction of the railroad was stalled in La Veta as the grade was surveyed and re-surveyed west for the ascent of the Sangre de Cristos. La Veta Pass was at the time the highest pass ever crossed by rail in the United States. In 1880, it was estimated that as many as 100 heavily loaded freight wagons left La Veta each day during the summer and fall headed west over the pass carrying goods bound for the rich mines of the San Juan Mountains. Others arrived daily, bringing ore, bullion, hides and furs, to be loaded onto the railroad cars for shipment north and east, or freighted on to Pueblo, CO. By the end of the 1880s, standard gauge rails were laid all the way to La Veta, but narrow gauge continued west over the pass and onward to Alamosa, CO. In La Veta, everything had to be transferred. Produce, ore, timber, and livestock came from the west and unloaded from the narrow gauge line and loaded onto the standard. The opposite pattern occurred heading west from La Veta. This was the commercial environment into which Edwin L. Smith immersed himself upon his arrival in 1900.<sup>12</sup>

Edwin L. Smith (1865-1935) was an important merchant in La Veta between 1900 and his death in 1935. With members of his extended family, Smith built many of the stores and homes that still stand and make up part of the La Veta Historic Preservation District. Smith was the son of Peter and Selena Smith. Peter was a miller and owned flour mills in the San Luis Valley and Nathrop, Colorado. Peter bought the La Veta roller mills in 1900, and the family moved to town. The Smith Family included son Edwin, and his wife Lilly May. Edwin opened a grocery store in the "Francisco building on Main Street" in April, 1900. This building, now razed, originally stood on Francisco Street and belonged to Andrew L. Francisco, brother of Colonel John M. Francisco, a builder of Francisco Fort. The building was moved to Main Street in 1900. After moving in, Edwin soon added dry goods to his grocery stock. The family lived in rooms behind the store. In 1901, Edwin moved to what was known as the Bissell Building, built in the 1870s. He purchased the building in 1902 and built a 30' addition onto the rear for a grocery department and living rooms. In 1902, Smith opened the first legal bank in La Veta in a small cage in his store. In 1907, he had the building moved to a lot (Lot 27, Block 2) adjoining his parent's home on Main Street This building is today incorporated into the La Veta Public Library and sits just south of the nominated property (see Figure 6). In 1911, Smith sold his store and moved away from La Veta. He returned within months and bought the lots on the corner of West Francisco and Main streets, now called 300 South Main, or lots 19 and 20, Block 7, in 1911. Smith had purchased the stock of several other merchants who were either relocating or going broke, and also purchased his supplies by the railroad carload. He had built a 25' X 60' warehouse near the railroad tracks to hold the merchandise. After construction of the building, Smith became probably the most successful merchant in town.<sup>13</sup>

The north side of the Edwin L. Smith Building was Smith's general store and food market, and south of the partition was the Photoplay Theater, a silent movie theater. In 1913, the movie theater relocated to the Kincaid Building on Main Street and Smith demolished the dividing wall and expanded his business filling the entire building. In 1920, local businessman E.C. Stream bought Smith's stock of dry goods and occupied the south part of the store with Smith's groceries, furniture, rugs and sundries on the north side. It stayed in this configuration until Smith's death in 1935 in the small apartment built by Smith in 1913) attached to the building's west-facing wall. Stream purchased the building from Mrs. Lilly Smith, and the building became known as Stream's. In 1945, Vern and Marie Bristol purchased the building from Stream and opened it as Gamble's, The Friendly Store, a chain out of Denver. After a few years, the business relationship with Gamble's was ended, and the building was known locally as Bristol's.<sup>14</sup> Doris Virginia Bristol Tracy (1920-2010), a daughter of the Bristol's, was a longtime La Veta resident and owner of Bristol's (1946-1973). She was a member of the Women Airforce Service Pilots (WASP) during World War II. Doris Tracy took WASP training at Avenger Field in Sweetwater, Texas in 1943, and during her WASP experience, flew AT-10 engineering flight tests, co-piloted B-24s, and C-45 administrative flights. After WASP was disbanded, Doris moved to La Veta in 1945 to help open the Gambles store located in the Smith

<sup>11</sup> Christofferson, *La Veta, The First Forty Years*.

<sup>12</sup> *Ibid.*

<sup>13</sup> *La Veta Advertiser*, 7 April 1900; 14 February 1902; 15 February 1902; 8 June 1907; 10 February 1911; 23 February 1911; 5 May 1911; 26 May 1911; 25 August 1911.

<sup>14</sup> *Ibid.*, 25 July 1913; 3 October 1913; 21 November 1913; 30 January 1920; 24 May 1935; 10 July 1935; 16 November 1945; 7 December 1945; La Veta Public Library Historical Archives, Property and Historic Photograph Files.

Smith, Edwin L., Building

Name of Property

Huerfano CO

County and State

Building. She married Julian Tracy in 1946. WASP was awarded the Congressional Gold Medal in 2010. Doris Tracy died in La Veta the same year at the age of 90. Her life and WASP experience are commemorated by a bronze statue commissioned to La Veta artist Joan Haney, dedicated in 2011, and standing in the courtyard next to the south wall of the Edwin L. Smith Building.<sup>15</sup> In 1973, Jack Hall purchased the building from Bristol descendants; Hall renovated the building and called it Valley Hardware with a grand opening April 20, 1974. In 1977, Lewis Hastings and Mars Combes purchased the building from Hall, and continued Valley Hardware until 1992. The building was vacant from 1992 until 2002 when Denny and J Patterson renovated the interior into a health center complete with an indoor wave pool. In 2012, the building was purchased by Lance Freeman and Cynthia Bailey; all health equipment and the wave pool were removed, and a partition was built once again dividing the north from south sides. The north side became a restaurant called the Outpost, and the south was a community gathering and performance space called Francisco Crossing. In 2014, Tom Doerk purchased the building and continued Francisco Crossing, utilizing it as a place for public and community gatherings; the northeast quadrant was occupied by The Silk Road, a consignment shop. In 2017, the building was purchased by Emile Dubia, the current owner, and renamed La Veta Mercantile. The Edwin L. Smith Building was, and continues to be, an anchor of the commercial and social life of La Veta.<sup>16</sup>

### Criterion C - ARCHITECTURE

The Edwin L. Smith Building helps represent the broader transition in commercial architecture from frontier utilitarianism to permanent institutions in early-twentieth century La Veta. The building is representative of early-twentieth century commercial architecture with Italianate detailing and expressive of the use of locally quarried sandstone masonry. The transition in building styles from adobe mud brick and wood-frame culminated in 1889 with construction of the Masonic Lodge (210 Main Street), the first locally quarried sandstone commercial building on Main Street in La Veta.<sup>17</sup> At least sixteen of these early stone commercial buildings were constructed in town by Edward R. and Elmer E. Coleman who arrived in La Veta in 1895. They often teamed up with William Fey, a prolific contractor and stonemason in his own right. The transition from wood frame construction became imperative when the Town of La Veta banned new wood frame construction in the Main Street business district in 1908. Part of the concern was fire hazard, but perhaps more important was the growing conceit that La Veta was approaching permanence as a community, and that the commercial buildings should reflect that notion. Thus, there occurred the advent of locally quarried sandstone building construction in La Veta by master craftsmen such as the Coleman Brothers and William Fey.<sup>18</sup>

When constructed in 1911, the Edwin L. Smith Building was the last and largest of the sandstone commercial buildings then replacing adobe and wood-frame buildings in the burgeoning La Veta commercial business district (see Figure 7). Adobe and wood frame commercial enterprises occupied the site of Smith's building from the 1860s until its construction by E.R. Coleman & Brother in a style typical of late-nineteenth and early-twentieth century American storefronts. When completed and opened in August of 1911, the Smith Building was the largest sandstone building on Main Street, just as it is in 2020. Today, only the Baptist Church built in 1877 and the Masonic Lodge opened in 1889, stand taller on Main Street. The building opened as "the place to trade", housing groceries, dry-goods, hats, shoes, and various sundries on August 16, 1911, and was soon called "The Big Store on the Corner" by its clients.<sup>19</sup> The building contains a variety of character-defining features that are representative of early-twentieth century commercial architecture with Italianate detailing. It was finished with storefronts of clear plate glass display windows framed by wood and resting on massive sandstone foundation blocks, transoms, Italianate Style metal cornices, corbels, and pressed tin sheeting. The prominent position of the building on its ship prow-like corner is contrasted with the long row of smaller wood frame and sandstone Main Street storefronts extending to the north, making its architectural style prominent within La Veta.

---

### Developmental history/additional historic context information (if appropriate)

---

<sup>15</sup> Wings Across America, "WASP Doris Bristol Tracy, 43-W-5," WASP Final Flight, August 3, 2010. <https://wasppfinalflight.blogspot.com/2010/08/wasp-doris-bristol-tracy-43-w-5.html>.

<sup>16</sup> La Veta Public Library Historical Archives, Property and Historic Photograph Files; Emile Dubia (Owner) in discussion with preparer, January 2020.

<sup>17</sup> La Veta Historic Preservation Commission. Archival Files. La Veta, Colorado.

<sup>18</sup> Christofferson, *La Veta, The First Forty Years; La Veta Advertiser*, 14 March 1908.

<sup>19</sup> *La Veta Advertiser*, 9 June 1911; 5 April 1912.

Smith, Edwin L., Building  
Name of Property

Huerfano CO  
County and State

SMITH, EDWIN L., STORE

ELS = Edwin L. Smith

Dates = newspaper issues

LVA = La Veta Advertiser

WW = Walsenburg World

WI = Walsenburg World-Independent

HW = Huerfano World

Enterprise

HC = Huerfano County Grantee Books

- 7 Apr 1900 ELS bought Francisco's store on Francisco Street and is moving it to Main Street LVA  
14 Apr 1900 Store has been moved to south of Elrod's building [Elrod Lots 19-20-21, Block 7, so ELS Lot 22] LVA  
28 Apr 1900 ELS bought a [railroad] carload of groceries and will open his new dry goods store today LVA  
5 May 1900 Adding onto the rear of the store LVA  
2 June 1900 ELS adding living rooms to the rear of the store LVA  
14 July 1900 Open, first ad, dry goods LVA  
27 July 1900 8 pkgs Arbuckle Coffee, \$1; 8 lbs rolled oats 25¢; 11 cans string beans \$1. LVA  
13 Oct 1900 Outing Flannels, 8-10¢ yd; Ladies Union Suits 75¢; Mineral Rim Door Knobs 10¢ LVA  
1 Dec 1900 ELS is flooring and roofing the empty space between his store and Elrod's for a storeroom LVA  
  
2 Feb 1901 ELS bought Springer's Main Street restaurant [Lot 27, Block 2] and will move his store there LVA  
1 Mar 1901 invested in a delivery wagon LVA  
14 Mar 1901 ELS will move his dry goods and groceries into the old Bissell stand next week LVA  
6 Apr 1901 5¢ each - pair strap hinges, fire shovels, tea strainers, 9" pie pans, 2 qt stamped pans; 15¢ each - 6 qt pails, 2 qt milk pails, 3 qt stew pans, curry combs, 10x15 bread pans, full sized hammers LVA  
13 Apr 1901 George Hansen quit as delivery wagon driver, now Gene Gibbons LVA  
10 Aug 1901 ELS needs more room for his store, so will move his family from the back to a house and turn the living quarters into store rooms LVA  
24 Aug 1901 rented the Chinn residence where his parents used to live [on Oak Street] LVA  
7 Sept 1901 ELS sold his old store [in Block 7] to E.L. Hazard [a harness maker] LVA  
  
4 Jan 1902 reported sales of \$1,600 to \$2,000 per month LVA  
13 Feb 1902 La Veta Bank opened in Smith building with ELS cashier WW. 14 Feb 1902 LVA  
14 Feb 1902 C.H. Bissell sold to ELS HC Book 4  
15 Feb 1902 ELS bought the building from C.H. Bissell and will build a 30 foot extension onto the rear for a grocery department and living rooms LVA  
13 Mar 1902 ELS is enlarging his store with an addition [in Block 2] LVA  
26 Apr 1902 ELS built a fence around the residence portion of his store, on the south and west LVA  
2 May 1902 running two delivery wagons due to the rush of business LVA  
19 July 1902 finds himself too busy with selling dry goods, shoes, etc., and running the bank to handle groceries, so he sold his stock to Wm. McLain who has leased a lot from J.M. Elrod on the corner of Main & Francisco and will build an 18 by 40 foot frame building LVA  
  
21 Feb 1903 instituted a plan whereby a 25¢ purchase can earn the customer a coupon, with a number of these one receives a nice present LVA  
4 Apr 1903 bought a printing press so as to keep his customers supplied with announcements LVA  
12 Dec 1903 has lighted his store with gaslights LVA

1 of 5

Smith, Edwin L., Building  
Name of Property

Huerfano CO  
County and State

- 5 Mar 1904 redecorated his store in anticipation of the arrival of his spring goods. Grand opening of millinery will be Friday LVA
- 2 Apr 1904 ELS bought six lots at the corner of Virginia and Main streets LVA
- 23 Apr 1904 Miss Armstrong will work this summer while Mrs. ELS and her sister Mrs. McLain go to the World's Fair [in St. Louis] LVA
- March 1905 ELS sold bank to the Wiedeman brothers LVA
- 1 Apr 1905 90 ladies attended the millinery opening and received a souvenir cup and saucer LVA
- 15 Apr 1905 Coleman Brothers will build ELS a three room home on his residential lots LVA
- 22 Apr 1905 Will build four rooms instead of three LVA
- 1 Sept 1905 ELS bought Lots 17-18, Block 10 from Lula Vories HC Book 5
- 30 Sept 1905 Mr and Mrs ELS moved into their new home LVA
- 7 Oct 1905 rented the Beckwith Bakery (south of store) for storage and a meeting hall LVA
- 30 Dec 1905 ELS building onto the rear of his store [in Block 2] LVA
- 18 Aug 1906 ELS having adobies laid for the walls of the new store room LVA
- 8 Sept 1906 One adobie wall collapsed just after completion LVA
- 29 Dec 1906 installed a new lighting system and "cash carriers" LVA
- 9 Mar 1907 will build a porch in front of the store in such a way the band can use the roof as a band stand for Sunday concerts LVA
- 28 Mar 07/47 opened his spring goods Thursday while the band played several selections on THE NEW PORCH LVA
- 8 June 1907 ELS store in former Bissell building [Lot 27, Block 2], formerly R.A. "Bob" Moore's store six years ago LVA
- 15 June 1907 ELS opened his first store in La Veta April 29, 1900, selling groceries only in a small store. Now he has a 22 by 142 foot building, the largest in La Veta. He handles ladies clothes, groceries, etc. He has a 25 by 60 foot warehouse near the railroad tracks, a neat home on south Main and business lots to build on. His clerical force is Maude Vasquez, Mrs. Blanche Becker, dry goods; George Carroll, Will McLain and George Hanson LVA
- 20 July 1907 ELS bought 3 lots north of Powell Photo Gallery on Main Street and will build a \$3,000 store building [Powell had Lots 29-30, Block 7, so Smith bought Lots 26-28. However, he sold these lots to his parents, Peter and Selena Smith, who built the large stone home there in 1909] LVA
- 28 Sept 1907 purchased a new cash register, all mistakes will be rectified by it LVA
- 7 Mar 1908 will move to the Eggleston building [on the east side of Main] while the new store is being built, in with the grocery store of McLain and Carson LVA
- 14 Mar 1908 ELS will build a new store but since Town Board decrees no frame buildings can have iron sheeting, he may have to build of stone LVA
- [sometime in here ELS had the old Bissell building moved to Lot 26, Block 7]
- 21 Mar 1908 moved the contents of the newest part of his building up Main Street LVA
- 28 Mar 1908 ELS is building a stone store 100 by 25 feet, which will be the biggest store in town. Also remodeling the old building "higher up the street" [the one in Block 7] LVA
- 30 May 1908 will move into new store next week LVA
- 13 June 1908 The new store is done. 150 feet deep, and has electricity. Inside, the front has the millinery and notions, the mid section is for dry goods and shoes, and the rear is for clothing and carpets. It is the best lit store in town LVA

2 of 5

Smith, Edwin L., Building  
Name of Property

Huerfano CO  
County and State

- 13 Aug 1909 ELS to St. Louis to buy his fall stock of goods LVA  
22 Oct 1909 selling out all millinery at half price LVA
- 7 Jan 1910 thinking of adding a grocery department LVA  
21 Jan 1910 bought out the grocery stock of La Veta Mercantile (William McLain) and will put it into the rear of his own building; dry goods up front LVA  
22 Apr 1910 celebrating 10 years of business in La Veta LVA  
6 May 1910 employed 8 clerks last Friday for his anniversary sale LVA
- 10 Feb 1911 sold all his stock to Cisney and Sparks LVA  
[ELS sold out his store and moved away LVA]
- 23 Feb 1911 Lease, ELS to A.H. Sparks, Lot 27, Block 2, including warehouse on railroad grounds HC Book 6  
5 May 1911 ELS sold out, moved, came back and is rebuying his store. He bought out the furniture stock of I.R. Voorhees and is working out of Voorhees' store [on West Francisco Street] LVA  
26 May 1911 ELS bought J.M. Elrod's corner [at West Francisco and Main] lots, and the cement blocks and material on the ground [Elrod was planning to build there, but died]. Mrs. Elrod keeps the 22 by 36 building at the west end of the property [by the alley] as her undertaking parlor. LVA  
9 June 1911 E.R. Coleman will build ELS's new store. The building will have a balcony for carpets. A separate store room 15 by 65 feet will be built on the southeast side for renting purposes. Will use the cement blocks he bought for a 25 x 30' building on the west end of his store LVA  
21 July 1911 walls of new store almost up and he expects to take possession in September LVA  
25 Aug 1911 leaving for the east to buy another carload of furniture LVA  
29 Sept 1911 ELS is moving his stock into the new building LVA  
13 Oct 1911 The new store is open LVA  
15 Dec 1911 For Sale - 1,585 cement blocks at a bargain LVA
- 5 Jan 1912 T.P. Steele has closed his picture show in Kincaid Hall and will reopen next week in the new Smith building LVA  
26 Jan 1912 ELS sold to J.G. Bischoff HC Book 6  
2 Feb 1912 buying a stock of furniture in Monte Vista LVA  
5 Apr 1912 Adv: "The Big Store on the Corner" LVA  
also, rented a portion of his store to Ritchey-Gibbons Hardware LVA  
14 June 1912 For Sale: four room house with bath, pantry and closets LVA  
20 Sept 1912 T.P. Steele sold the Photoplay Theater LVA  
18 Oct 1912 ELS bought out the stock of the Ladies Bazaar LVA  
also, is operating a branch store in Monte Vista LVA  
9 May 1913 ELS traded his stock and home to Mr. Bischoff for the latter's stock of goods in Bessemer opposite Minnequa Bank and is moving to Pueblo LVA  
10 May 1913 ELS sold home to Loretta Bischoff, Lots 28-30, Block 10 [Main and Virginia] HC Book 7  
13 May 1913 ELS sold his home at Virginia and Main to Cisney and Sparks LVA  
21 May 1913 J.G. and Loretta Bischoff sold Lot 27, Block 2, to Cisney and Sparks  
4 July 1913 ELS bought out Ritchey's interest in the Ritchey and Gibbons [hardware and plumbing] business LVA  
25 July 1913 Mr and Mrs ELS building a home behind the big store LVA  
3 Oct 1913 J.E. Scott moved the Photoplay back to Kincaid Hall  
21 Nov 1913 ELS is taking out the partition between his furniture and hardware store and the old Photoplay so his store will be 50 by 100 feet LVA

3 of 5

Smith, Edwin L., Building  
Name of Property

Huerfano CO  
County and State

- 26 Nov 1914 Holiday goods. Open evenings Enterprise  
26 Mar 1915 ELS bought out the dry goods stock of A.H. Sparks LVA  
21 May 1915 ELS bought two lots at the corner of Main and Garland from Mrs. R.L. Hammett LVA  
[12 Feb 1919 ELS bought Lots 27-28, Block 15 from Narmesia Hammett HC Book 8]  
13 Aug 1915 sold his furniture stock to G.R. Benefiel LVA
- 21 Jan 1916 \$4.50 shoes on sale for \$2.95 LVA  
21 Apr 1916 adding groceries LVA  
5 May 1916 opens his new grocery department tomorrow LVA  
26 May 1916 Wm. McLain arrived back and will take charge of ELS' grocery department LVA  
21 July 1916 fire in store but insurance covers the loss LVA
- 5 Jan 1917 has Wm. McLain driving the delivery wagon to the coal mines (Oakview and Ojo) LVA  
13 Apr 1917 ELS bought his old house back LVA  
22 June 1917 ELS Virginia and Main, moved back into old home LVA  
24 Aug 1917 W.H. Woodruff is moving back and will take charge of the grocery department LVA
- 19 Apr 1918 For Sale - Four room frame house, best location in town LVA  
3 May 1918 ELS sold his house on Field to D.A. Webb LVA  
10 May 1918 Wm. McLain is returning LVA  
also, Solitaire Coffee 40¢ lb; childrens dresses 60¢ to \$2 LVA  
13 Aug 1918 bought the Mauldin grocery stock and Alex Mauldin will clerk for ELS LVA
- 6 June 1919 Pansy Beamer is new clerk to replace Eutha Martin who resigned LVA  
5 Sept 1919 ELS sold his stone house, Main at Virginia, to Clyde Estes for \$2,750 LVA [this building became the Methodist parsonage]  
3 Oct 1919 Mr and Mrs settled into new home behind the store LVA  
7 Nov 1919 Again trying to fix the roof to stop it from leaking LVA
- 30 Jan 1920 E.C. Stream bought out ELS's stock of dry goods and will partition off part of the store so the groceries will be on one side, dry goods on the other LVA  
30 Apr 1920 Neal Baysinger replaced Fred Dryden as clerk LVA  
14 May 1920 20<sup>th</sup> anniversary sale  
25 June 1920 bought the small cement building [by the alley] west of store from Mrs. Elrod LVA  
16 July 1920 ELS and E.V. Gibbons bought the building south of Smith's store for a car showroom which will be arranged as soon as Mr. Webb moves his shop to his own building [one door south] lva  
29 Oct 1920 will open a meat market in his grocery LVA
- 15 Apr 1921 A big plate glass window blew in during the blizzard LVA  
24 May 21/46 Guy Lougheed is driving ELS' delivery truck LVA  
4 Oct 21/46 resigned as town treasurer [just elected April, on the pro-sewer ticket] LVA  
14 Oct 1921 Smith's Cash Store. Groceries only. 13 lbs sugar \$1; 16 oz Sun Maid Raisins 30¢; Fancy Prunes 17½¢ lb; 1 lb. Solitaire Coffee 49¢; 5 rolls toilet paper 25¢; pot roast 16¢ lb. LVA
- 10 Oct 22/47 Roy Springer replaced Guy Lougheed at the store LVA
- 12 Jan 1923 Fixing up the little building on the west for a forest service office (Ranger Karl Gilbert) LVA  
23 Feb 1923 sold grocery store to Wm. McLain and is moving to Denver LVA

4 of 5

Smith, Edwin L., Building  
Name of Property

Huerfano CO  
County and State

- 31 Aug 1923 a terrible rainstorm ruined the roof and ceiling in the Smith building LVA
- 26 Oct 1923 Homemade pies and cakes at McLain's Grocery LVA
- 9 Nov 1923 W.A. Campbell will take charge of McLain's meat market, A.C. Mauldin, manager. Will be known as the Blue Ribbon Meat Market LVA
  
- 20 June 1924 ELS sold his grocery business in Denver LVA
- 15 Aug 1924 he's back, and would like to start a business LVA
- 10 Oct 1924 is fixing up the former forest service office for a bachelor's hall (one presumes his wife and daughter did not accompany him back to La Veta) LVA
- 21 Nov 1924 ELS took over the meat market in his store run by W.A. Campbell LVA
  
- 11 Mar 1927 got a new delivery truck LVA
- 29 July 1927 putting up a new metal ceiling LVA
  
- 16 Nov 1928 will begin giving S&H Green Stamps Saturday, Nov. 17 LVA
  
- 28 Mar 1930 a list of merchants does NOT include ELS LVA
- 16 May 1930 ELS again coming back, like the proverbial penny . . . LVA
- 30 May 1930 is living in apartment behind the store and adding a sun porch LVA
  
- 9 June 1933 ELS moving his stock [from the bakery building] to the U Tote 'Em LVA
  
- 16 Mar 1934 moved his fruit stand into the little building behind his store and west of his home LVA
  
- 1932, 1933 Delinquent tax list, Lots 27-28, Block 15 WI
  
- 24 May 35 obit, ELS. Born in Kansas 1866. Married Lilly May Carroll in Illinois, 1896. To La Veta from Alamosa and went into the flour mill business with his brother-in-law Charles Carroll for a while. Started a grocery and erected the store at Main and Francisco for dry goods, groceries and furniture. He was the first to start a banking business in La Veta. Built the now Methodist parsonage. Moved to Monte Vista and back, moved to Denver and back. Leaves a wife, a daughter and one sister. Died and buried in La Veta LVA [at the time of his death he and Mrs. Smith were living in their apartment behind the big store on the corner of Main and Francisco]
- 7 June 1935 H.M. Stockwell took over Mr. Smith's second hand furniture and may open a business LVA
- 10 July 1935 E.C. Stream buys the big store from ELS's widow LVA
  
- 4 June 1937 Adv: E.C. Stream General Store LVA
- 8 Oct 1937 Fire heavily damaged E.C. Stream Store LVA
- 19 Nov 1937 Stream store reopens after repairing fire damage LVA
  
- 27 May 1938 Mrs. Lillie Smith has an attractive new home [Lots 27-28, Block 15, Garland and Main] LVA
  
- 16 Nov 1945 Stream sold to Mr and Mrs Vern Bristol LVA
- 7 Dec 1945 Gamble's, The Friendly Store LVA
  
- 28 Nov 1958 Mrs. ELS dies in her little house at Garland and Main HW

5 of 5

<sup>20</sup> Collected research in possession of building owner. Potentially prepared by Nancy C. Christofferson or Abbey



Smith, Edwin L., Building  
Name of Property

Huerfano CO  
County and State

## 9. Major Bibliographical References

**Bibliography** (Cite the books, articles, and other sources used in preparing this form.)

Christman, Abbey. *La Veta Town Survey*. Denver: University of Colorado Denver, College of Architecture and Planning, the Center of Preservation Research, 2015. Certified Local Government Grant CO-14-019.

Christofferson, Nancy C., *La Veta, The First Forty Years*. La Veta: self-published, 2001.

Fort Francisco Historical Archives. Edwin L. Smith Building Property File., La Veta, Colorado.

La Veta Historic Preservation Commission. Archival Files. La Veta, Colorado.

La Veta Public Library Historical Archives. Property and Historic Photograph Files. La Veta, Colorado.

Murphey, Sara. *Huerfano County Survey*. Huerfano County: Huerfano County Historical Society, 1982.

Sanborn Map Co. "La Veta, Colorado." New York: Sanborn Fire Insurance Co., 1912-1930. Personal collection Clyde Schroeder.

Wings Across America. "WASP Doris Bristol Tracy, 43-W-5." WASP Final Flight. August 3, 2010.  
<https://waspfinalflight.blogspot.com/2010/08/wasp-doris-bristol-tracy-43-w-5.html>

## Newspapers

### *La Veta Advertiser*

7 April 1900  
14 February 1902  
15 February 1902  
8 Jun 1907  
14 March 1908  
21 March 1908  
13 June 1908  
10 February 1911  
23 February 1911  
5 May 1911  
26 May 1911  
9 June 1911  
25 August 1911  
5 January 1912  
5 April 1912  
25 July 1913  
3 October 1913  
21 November 1913  
30 January 1920

Smith, Edwin L., Building  
Name of Property

Huerfano CO  
County and State

- 15 April 1921
- 29 June 1927
- 24 May 1935
- 10 July 1935
- 8 October 1937
- 19 November 1937
- 16 November 1945
- 7 December 1945

**Previous documentation on file (NPS):**

- preliminary determination of individual listing (36 CFR 67 has been requested)
- previously listed in the National Register
- previously determined eligible by the National Register
- designated a National Historic Landmark
- recorded by Historic American Buildings Survey # \_\_\_\_\_
- recorded by Historic American Engineering Record # \_\_\_\_\_
- recorded by Historic American Landscape Survey # \_\_\_\_\_

**Primary location of additional data:**

- State Historic Preservation Office
  - Other State agency
  - Federal agency
  - Local government
  - University
  - Other
- Name of repository: \_\_\_\_\_

Historic Resources Survey Number (if assigned): 5HF.331

**10. Geographical Data**

**Acreage of Property** Less than an acre  
(Do not include previously listed resource acreage.)

**Latitude/Longitude**

Datum if other than WGS84: \_\_\_\_\_  
(Insert additional points as needed.)

1	<u>37d30'31"N</u>	<u>105d00'31"W</u>	3	_____	_____
	Latitude	Longitude		Latitude	Longitude

2	_____	_____	4	_____	_____
	Latitude	Longitude		Latitude	Longitude

or

**UTM References**

Datum: 13;499178 mE4151226 mN  
**NAD 1927** \_\_\_\_\_ or **NAD 1983**  \_\_\_\_\_  
(Insert additional UTM references as needed.)

1	_____	_____	_____
	Zone	Easting	Northing

3	_____	_____	_____
	Zone	Easting	Northing

2	_____	_____	_____
	Zone	Easting	Northing

4	_____	_____	_____
	Zone	Easting	Northing

Smith, Edwin L., Building  
Name of Property

Huerfano CO  
County and State

**Verbal Boundary Description** (Describe the boundaries of the property.)

The boundary includes the building and the land on which it is located. Only Parcel 1 contains the building pertinent to the current nomination. The legal description of the property is a parcel of land located in Lots 19 and 20 of block 7, Town of La Veta, County of Huerfano, State of Colorado and being more particularly described as follows: beginning at the northeast corner of Lot 19, thence west along the north line of said lot 19, a distance of 100.65 feet; thence south, a distance of 50 feet to a point on the south line of said Lot 20; thence east, along the south line of said Lot 20, a distance of 100.65 feet; thence north, along the east line of said Lots 19 and 20, a distance of 50 feet to the point of beginning. Legal description and diagram prepared by Wachob and Wachob, Inc. Professional Land Surveyors, Colorado City, Colorado.

**Boundary Justification** (Explain why the boundaries were selected.)

The boundary includes the entire city lots that have been historically and currently associated with the property.

---

**11. Form Prepared By**

---

name/title Bill Strawn (for property owner)  
organization \_\_\_\_\_ date 06/17/2020  
street & number 418 E. Moore Ave./PO Box 1021 telephone 469-309-2865  
city or town La Veta state CO zip code 81055  
e-mail \_\_\_\_\_

---

**Additional Documentation**

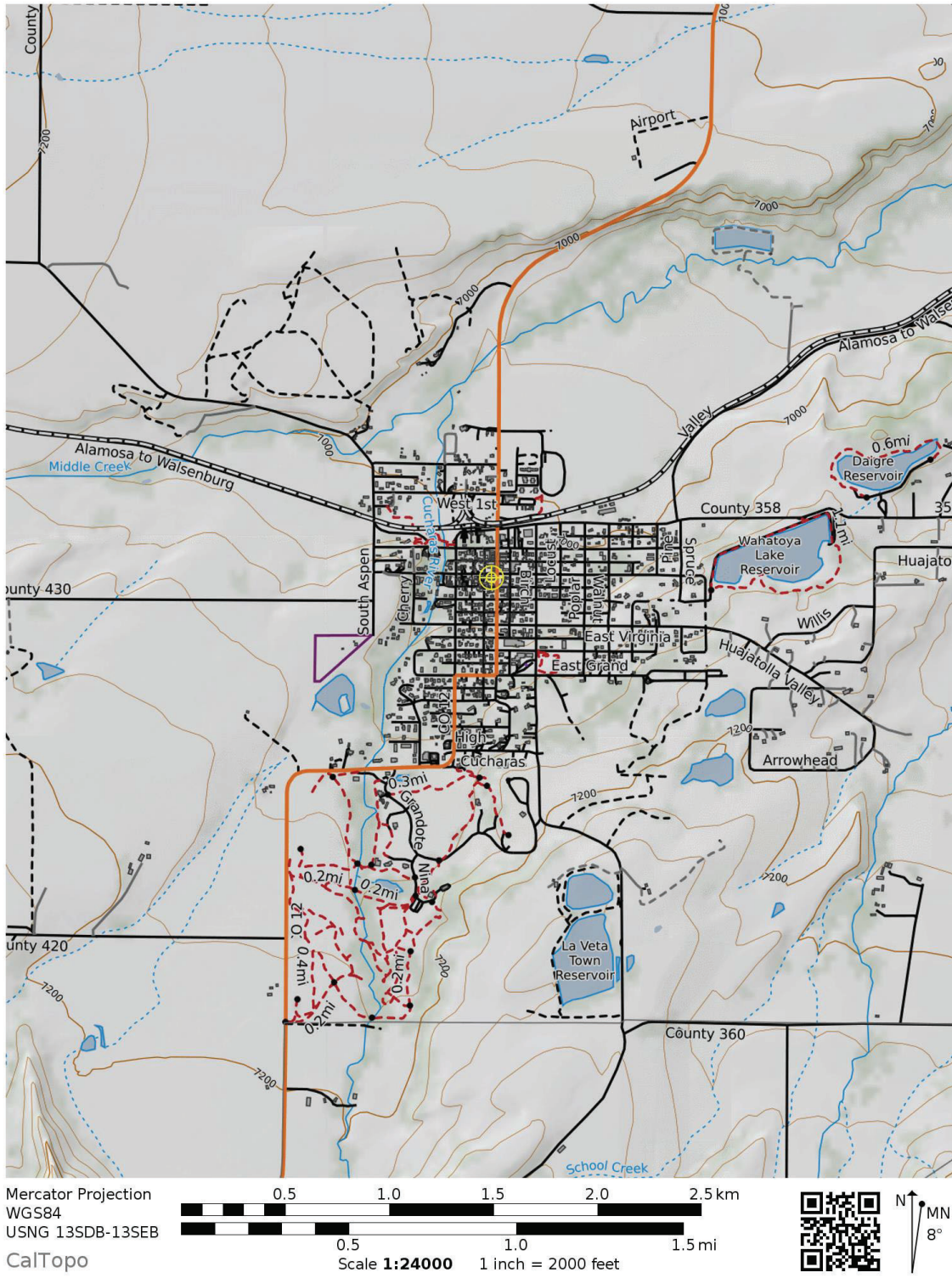
---

Submit the following items with the completed form:

Smith, Edwin L., Building  
Name of Property

Huerfano CO  
County and State

- **Maps:** A **USGS** map (7.5 or 15 minute series) or **Google Earth** map indicating the property's location.



Smith, Edwin L., Building  
Name of Property

Huerfano CO  
County and State

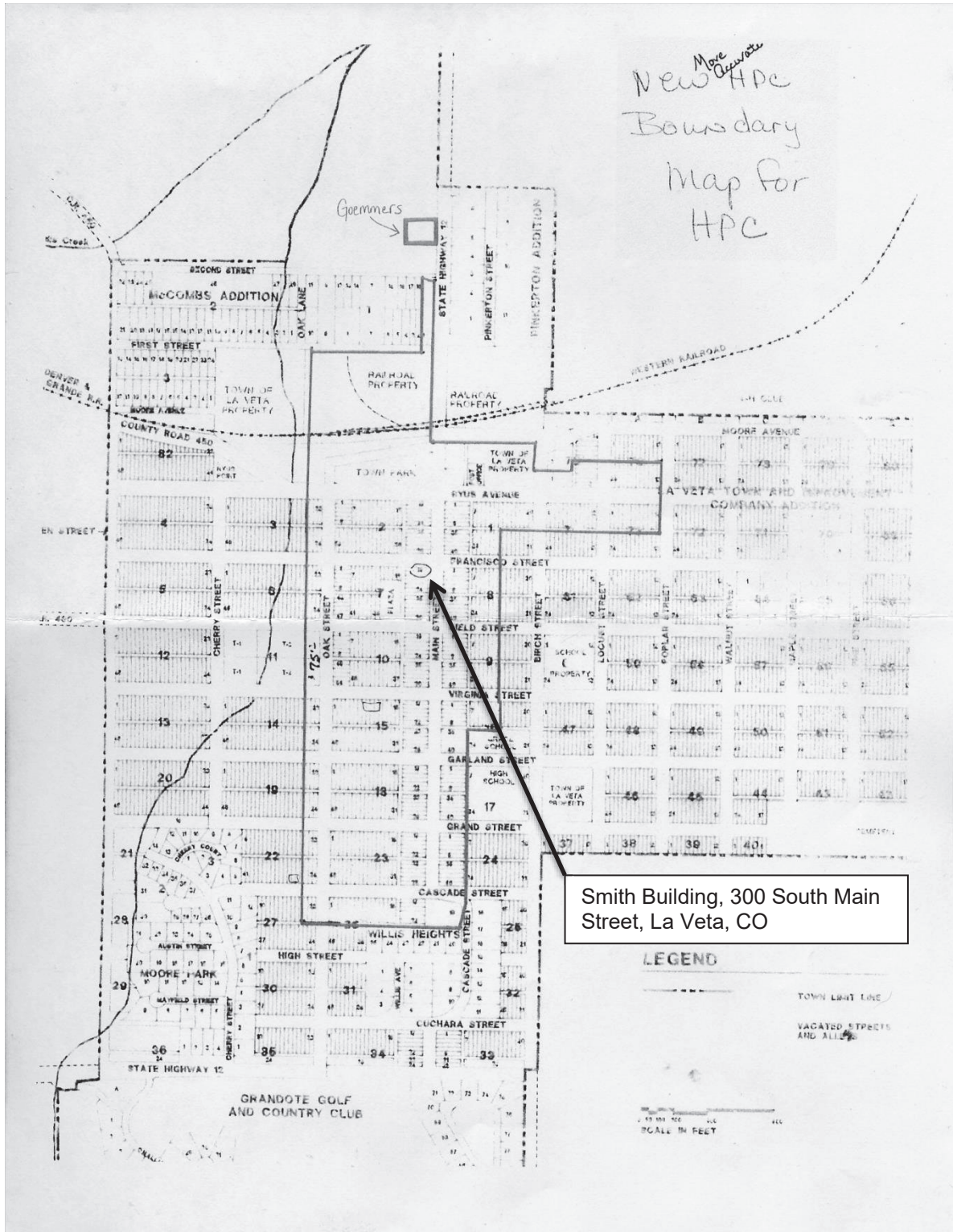


Figure 1. Map of Historic Preservation District, La Veta, CO

Smith, Edwin L., Building  
Name of Property

Huerfano CO  
County and State

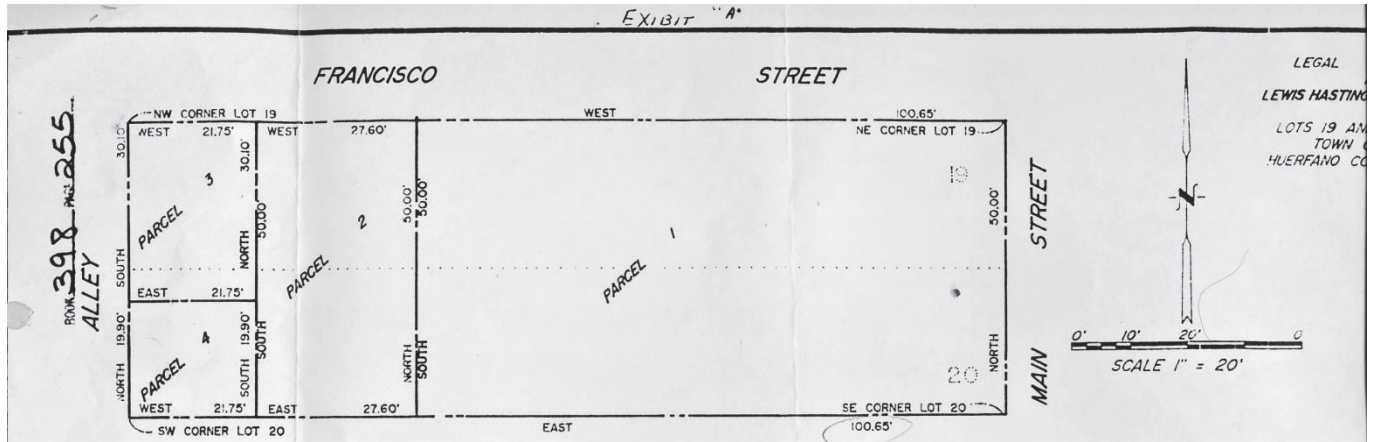


Figure 2. Diagram of the Smith Building prepared in the 1950s for previous owners Lewis Hastings and Mars Combes by Wachob and Wachob, Inc., Professional Land Surveyors, Colorado City, CO. The Smith Building occupies Lots 19 and 20, Block 7 Town of La Veta, CO. To scale.

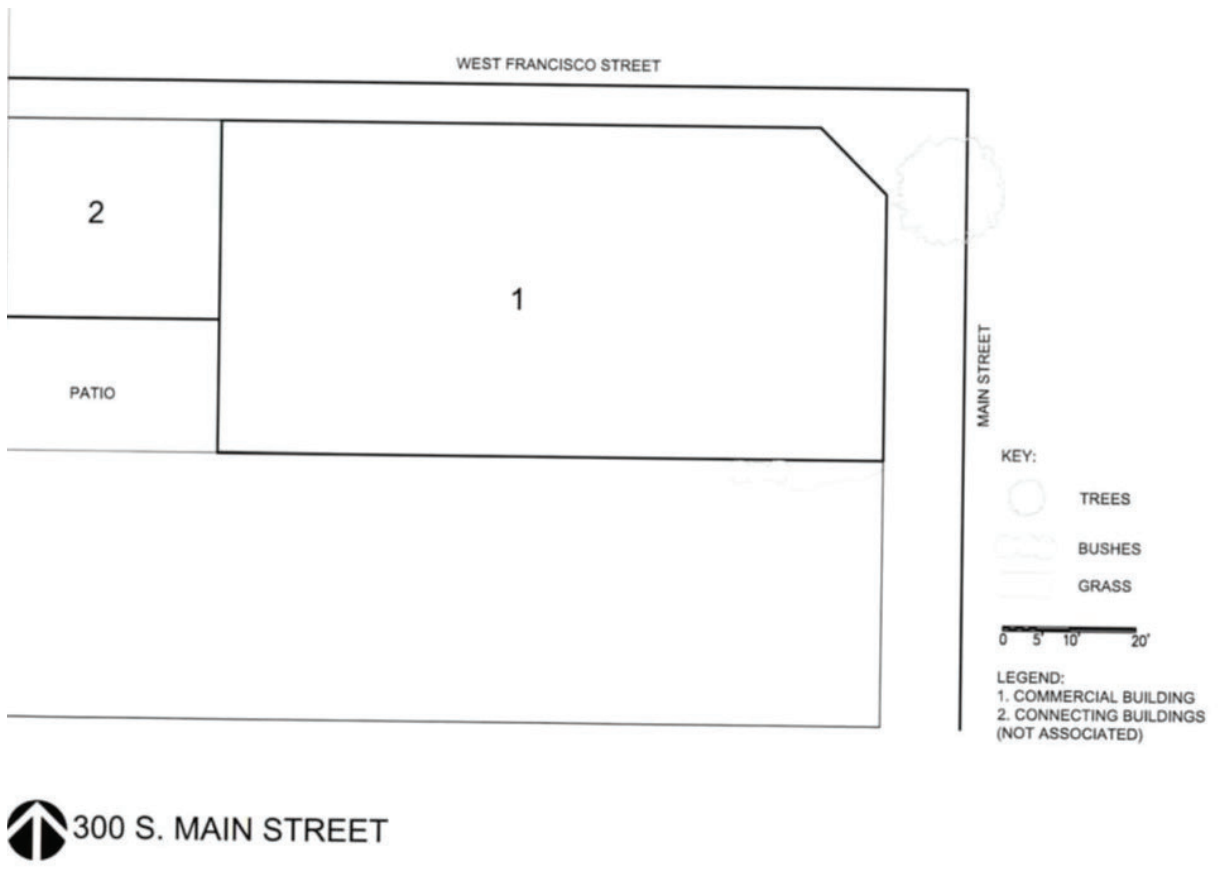


Figure 3. Sketch Map of southwest corner, intersection South Main and West Francisco Streets, La Veta, CO. The Smith Building occupies number 1 commercial building site and abuts from the north the present entrance to the Francisco Fort and Plaza from South Main Street. Map to scale. La Veta HPC archives

Smith, Edwin L., Building  
Name of Property

Huerfano CO  
County and State

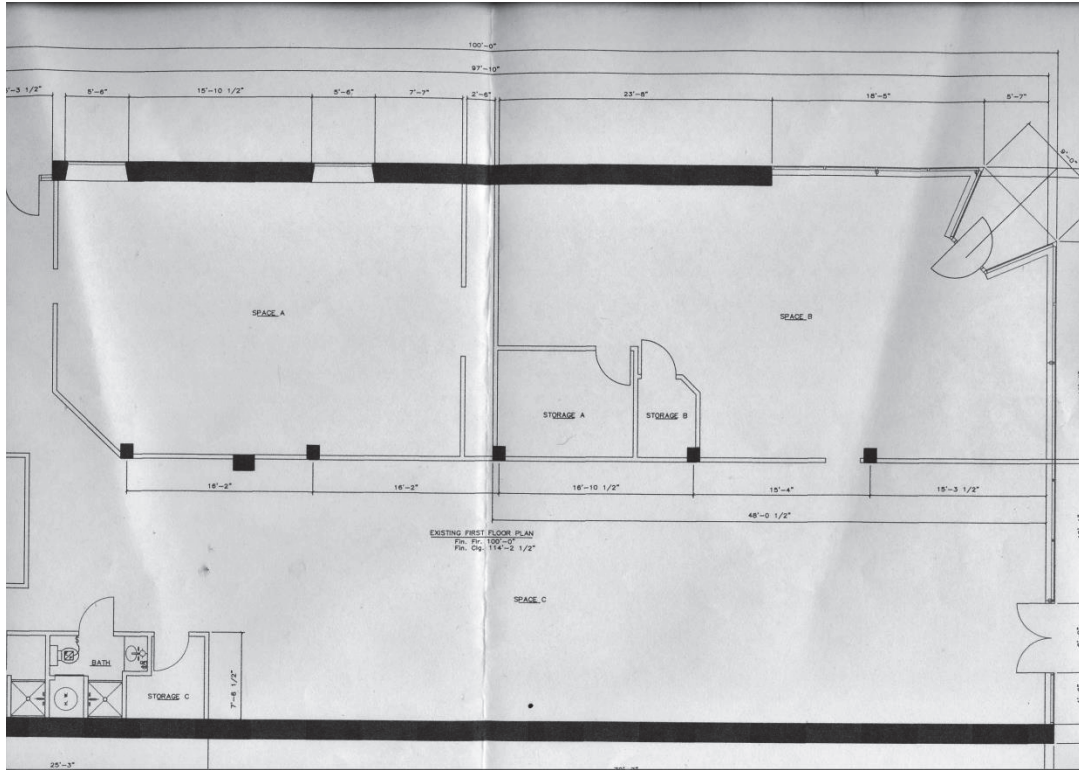


Figure 4. Architectural floor plan of interior of Smith Building prepared by architect Clyde Schroeder, Colorado License No. 201386 for previous owner Tom Doerk in 2014. North is top. Partition dividing north from south areas of building along south and west borders of Space A was demolished in 2014 to accommodate stage in Space A. Space B is currently retail commercial use; Space C is gallery and performance use. To scale.

Smith, Edwin L., Building

Name of Property

Huerfano CO

County and State

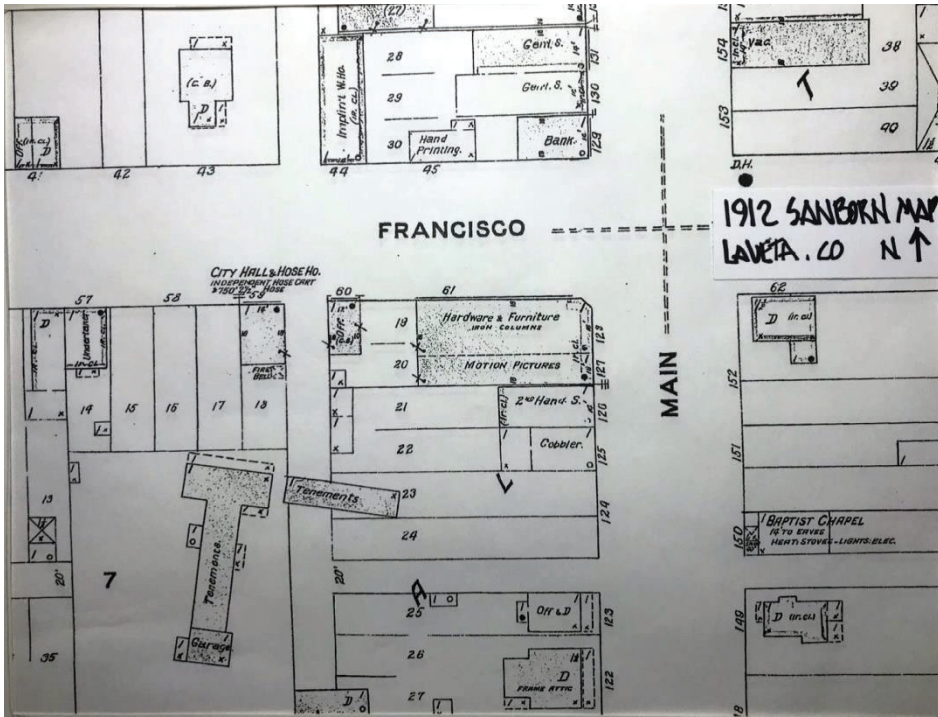


Figure 5. Sanborn Map of the intersection of West Francisco and Main streets, La Veta, CO, 1912. Sanborn Map provided by Clyde Schroeder.

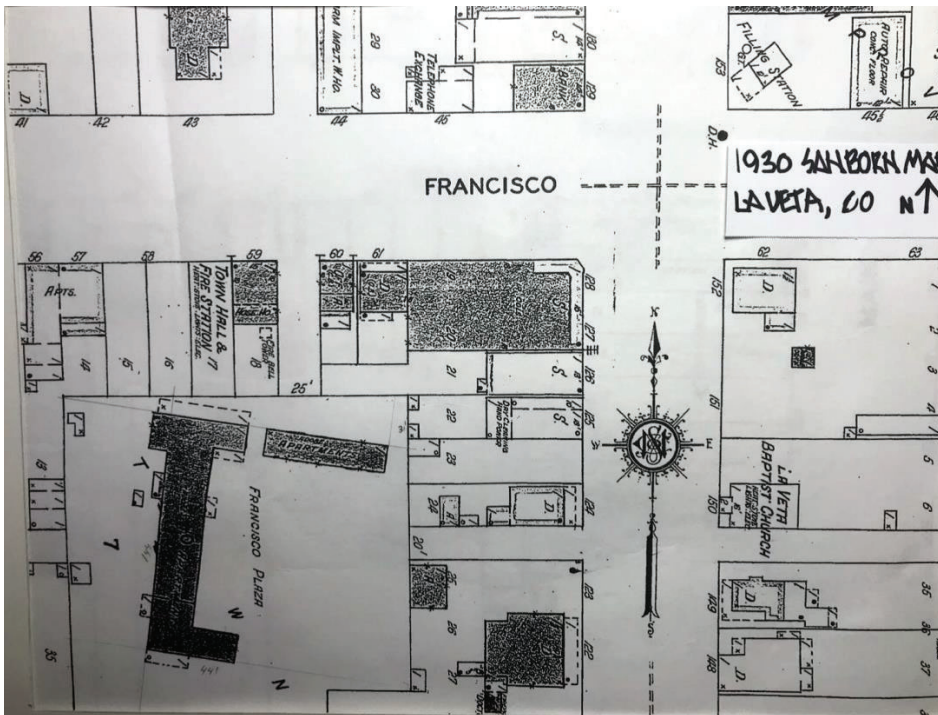


Figure 6. Sanborn Map, La Veta, CO, 1930 shows the situation surrounding the Smith Building during the time Smith and Stream occupied the north and south areas (1920-1935), respectively, of the Smith Building. Sanborn map provided by Clyde Schroeder



Smith, Edwin L., Building  
Name of Property

Huerfano CO  
County and State

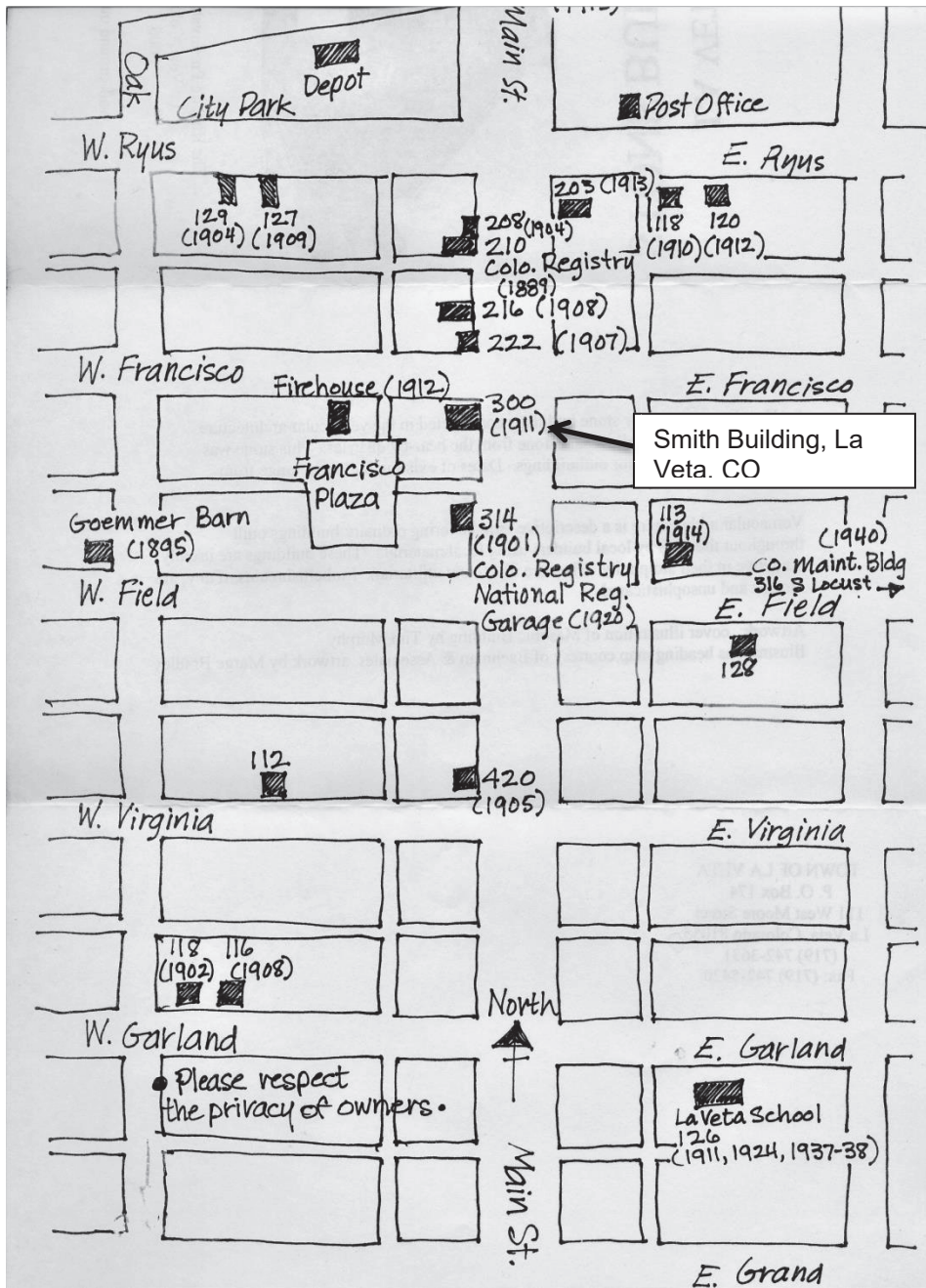


Figure 7. Map of historic sandstone buildings in La Veta, CO prepared for the Historic Preservation Committee (HPC) in 2006 by Marge Bradley. The Smith Building (1911) is at 300 South Main Street.

Smith, Edwin L., Building  
Name of Property

Huerfano CO  
County and State

- **Additional items:** (Check with the SHPO or FPO for any additional items.)

**Photographs:**

Submit clear and descriptive photographs. The size of each image must be 1600x1200 pixels at 300 ppi (pixels per inch) or larger. Key all photographs to the sketch map.

Name of Property: Edwin L. Smith Building

City or Vicinity: La Veta

County: Huerfano State: CO

Photographer: Bill Strawn, Clyde Schroeder

Date Photographed: Strawn, December, 2019; January, 2020; Schroeder, December, 2019

Description of Photograph(s) and number:

Photo 1	Northeast entrance, east and north-facing sides, Camera facing southwest.
Photo 2	North-facing side, detail of concrete block foundation below sandstone and flagstone courses abutting concrete sidewalk. Camera facing south.
Photo 3	East-facing storefront, detail of foundation covered by concrete with abutting concrete sidewalk. Camera facing west.
Photo 4	West-facing wall, detail of Portland cement pointing and original mortar between sandstone blocks. Camera facing east.
Photo 5	North-facing side. Camera facing south.
Photo 6	Historic photograph, ca. 1920s, northeast corner entrance and east and north storefronts. Camera facing southwest. Provided by Jim Tate.
Photo 7	Northeast entrance, east and north storefronts. Camera facing southwest.
Photo 8	East-facing storefront. Camera facing west.
Photo 9	North-facing storefront, detail of transom glazing with entablature above. Camera facing south.
Photo 10	Northeast corner entrance entablature. Camera facing southwest.
Photo 11	Southeast corner entablature, detail of triangle bracket. Camera facing northwest.
Photo 12	East-facing storefront entablature, detail with palmetto meotope between triglyph and modillion brackets above. Camera facing west.
Photo 13	Northeast storefront corner entablature, detail with end triangle bracket with sphere ball finial, palmetto meotope between triglyph between modillion brackets under corona and cymatium top. Camera facing northwest.
Photo 14	South facing-side and east-facing storefront. Camera facing northwest.
Photo 15	West-facing side and south-facing side. Camera facing north.
Photo 16	Roof with parapet on north-facing and east-facing sides. Camera facing east.
Photo 17	View of interior northeast quadrant, views out northeast entrance and north-facing and east-facing storefronts. Camera facing northeast.
Photo 18	Interior view out southeast display window, detail of window frame sandstone supporting foundation and abutting plywood flooring. Camera facing east.
Photo 19	Interior view of southeast quadrant and east-west partition with French doors into northeast quadrant and east storefront display windows with double doorway. Camera facing northeast.
Photo 20	Interior view of southeast and west areas from east storefront with east-west partition (right). Camera facing west.
Photo 21	Interior view of stage in northwest quadrant with north and south partition interior walls (right) and west wall (left). Camera facing north.
Photo 22	Interior view of southwest corner with contemporary bathroom enclosures and storage closets (right). Camera facing southwest.
Photo 23	Historic photograph, 1920s panoramic view of Main Street intersection with West Francisco Street taken from east side of Main Street and showing the Smith Building on the left. Camera facing west. Provided by Jim Tate.
Photo 24	Contemporary view of Main Street intersection with West Francisco Street taken from east side of Main Street and showing the Smith Building on the left. Camera facing west.
Photo 25	Historic photograph, 1946 image of east-facing storefront. Camera facing west. Provided by La Veta Public Library Historical Archives.

Smith, Edwin L., Building  
Name of Property

Huerfano CO  
County and State

Photo 26	Historic photograph, 1969 view of northeast corner entrance and north-facing and east-facing storefronts. Camera facing south. Source: La Veta Public Library Historic Archives.
Photo 27	Historic photograph, 1974 view of northeast corner entrance and north-facing and east-facing storefronts. Camera facing southwest. Source: La Veta Public Library Historic Archives.
Photo 28	Historic photograph, 1973 view of Main Street with south-facing wall and east-facing storefront of Smith Building (left). Camera facing north. Source: La Veta Public Library Historic Archives.
Photo 29	Contemporary view of Main Street with south-facing wall and east-facing storefront of Smith Building (left). Camera facing north.
Photo 30	Historic photograph, 1980 view of northeast corner entrance, north-facing storefront and wall and east-facing storefront. Camera facing southwest. Source: Sara Murphey, <i>Huerfano County Survey</i> .
Photo 31	Historic photograph, 1876 view of Fort Francisco and Plaza and D&RG railroad tracks in foreground. Camera facing northwest. Source: Fort Francisco Historical Archives.
Photo 32	Historic photograph, 1890s view of Francisco Fort and Plaza. Camera facing northwest. Source: Fort Francisco Historical Archives.

**Paperwork Reduction Act Statement:** This information is being collected for applications to the National Register of Historic Places to nominate properties for listing or determine eligibility for listing, to list properties, and to amend existing listings. Response to this request is required to obtain a benefit in accordance with the National Historic Preservation Act, as amended (16 U.S.C.460 et seq.).

**Estimated Burden Statement:** Public reporting burden for this form is estimated to average 18 hours per response including time for reviewing instructions, gathering and maintaining data, and completing and reviewing the form. Direct comments regarding this burden estimate or any aspect of this form to the Office of Planning and Performance Management, U.S. Dept. of the Interior, 1849 C. Street, NW, Washington, DC.