

Cultural Landscapes in the Western United States



A Workshop Cosponsored by the
Colorado Office of Archaeology
and Historic Preservation
and the U.S. National Park Service
Trinity United Methodist Church
Denver, Colorado
October 4 – 5, 2011

Cultural Landscapes in the Western United States

Part 8 of 9

Nominating Traditional Cultural Places to the National Register

This is an automated presentation of the speakers' PowerPoint slides with their notes, if provided (click on Notes tab), and some video (mostly from the second day) of the presentations.

Due to the file size of the October 4 & 5, 2011 presentations the workshop has been uploaded in the nine thematic segments. The viewer can pause, advance forward or return to any slide by clicking on the index at any time.

AGENDA - Wednesday, October 5 P.M.

1:00 Nominating Traditional Cultural Places to the National Register

1. Overview of TCPs and the National Register, Barbara Wyatt (NPS)
2. Red Butte TCP: Collaborative Management of Traditional Cultural Properties at the Kaibab National Forest, Mike Lyndon (USFS)
3. A Tribal Perspective on the Red Butte TCP, TBA
4. Defining Boundaries of a TCP: Mt. Taylor as a Case Study, Cynthia Benedict (USFS)
5. A Tribal Perspective on Mt. Taylor, TBA
6. Panel Discussion on TCPs

Cultural Landscapes in the Western United States

Carletta Tilousi – Havasupai Tribal Council
& Michael G. Lyndon U.S. Forest Tribal Liaison

**Red Butte TCP: Collaborative Management
of Traditional Cultural Properties at the
Kaibab National Forest**

**NOMINATING TRADITIONAL
CULTURAL PLACES TO THE
NATIONAL REGISTER**

Red Butte TCP: Collaborative Management of Traditional Cultural Properties on the Kaibab National Forest

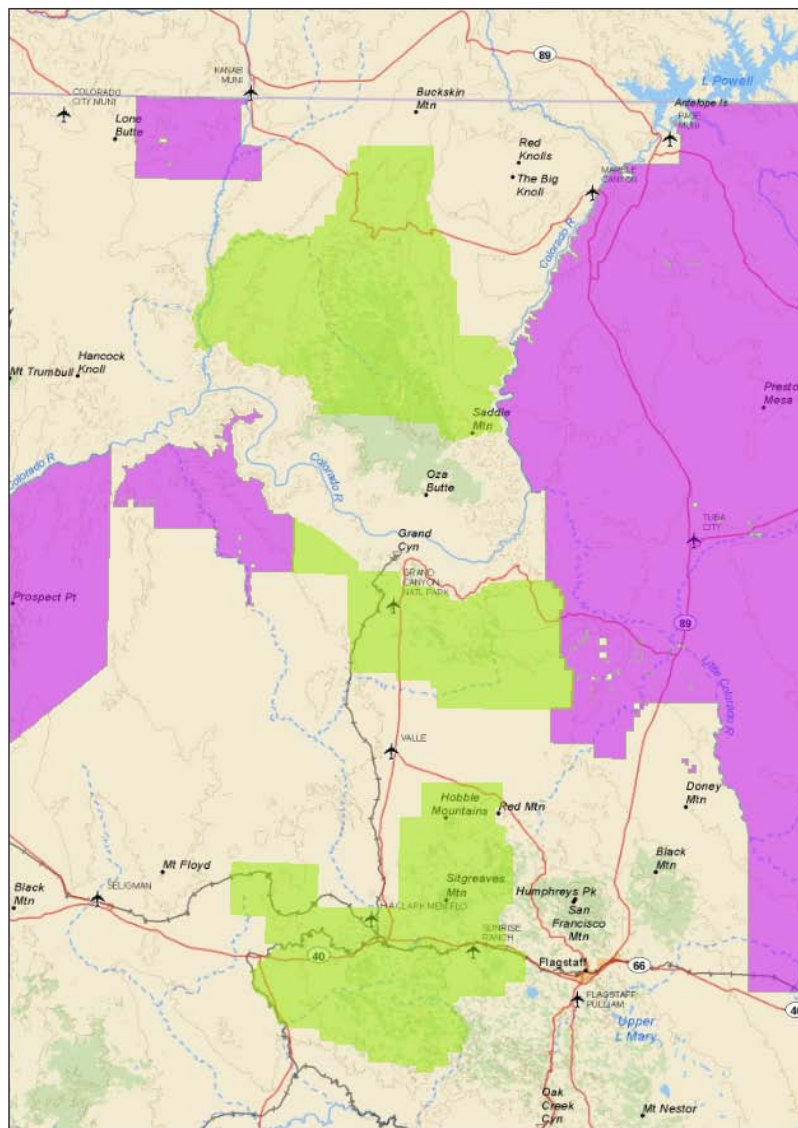


Michael G. Lyndon
Forest Tribal Liaison
Kaibab National Forest

And

Carletta Tilousi
Havasupai Tribal Council
Havasupai Tribe



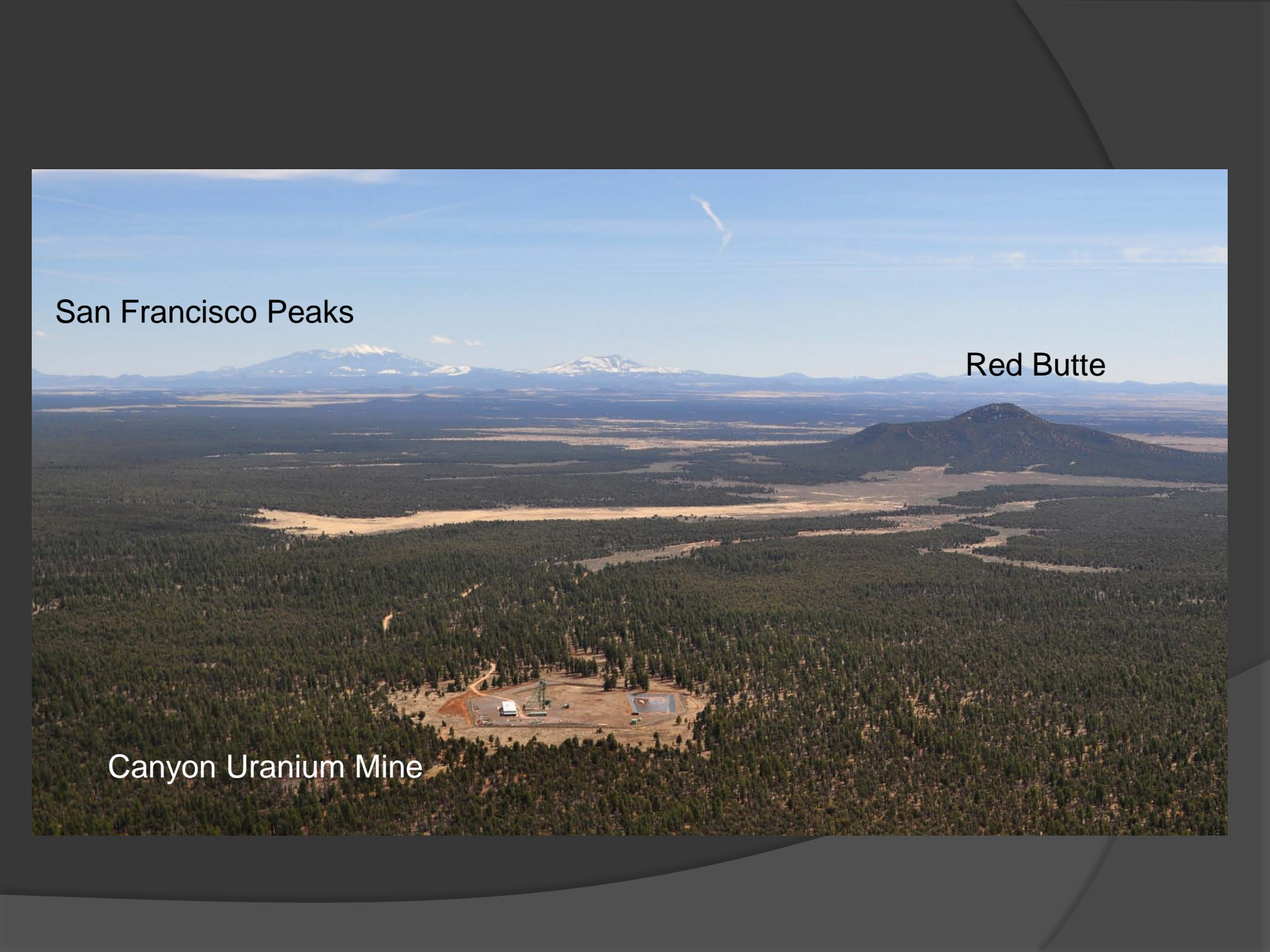






View From the Summit of Red Butte



An aerial photograph showing a vast landscape. In the foreground, a dense forest of evergreen trees covers the ground. A small, cleared area in the lower center contains a mine site with a white building, a small pond, and some equipment. In the middle ground, a large, flat, open area stretches out. In the background, a range of mountains is visible, with several peaks covered in snow. The sky is clear and blue.

San Francisco Peaks

Red Butte

Canyon Uranium Mine

United we stand to protect Mother Earth



Gathering at Red Butte

(Sacred traditional site of Havasu Baaja at wii-gid-wisa, 15 miles south of Tusayan)

FREE AND OPEN TO THE PUBLIC

July 25th and July 26th, 2009



SATURDAY NIGHT CONCERT—Havasupai, Hopi and Aztec Dancers; Burning Sky w/ John Densmore; Casper; Clarence Clearwater & Blackfire!

SUNDAY - Public forum on uranium mining and protecting sacred sites. Raise your voices to say *No!* to uranium mining!

GUEST SPEAKERS include Dennis Banks, Havasupai elders and others.

Free camp sites & food provided.
Bring your own utensils & camping gear.
No drugs, alcohol or uranium allowed!
Call 774-6103 for more details.



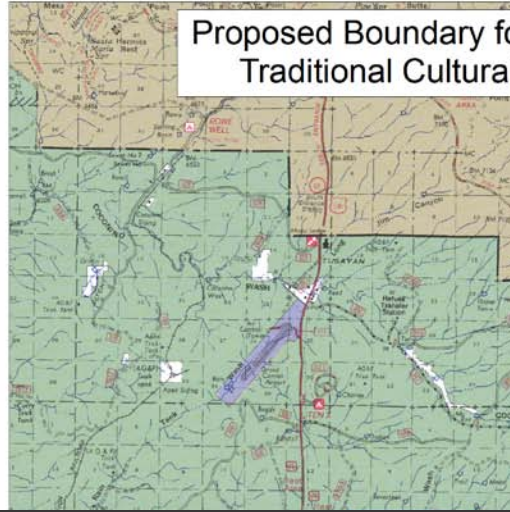
To get to Red Butte:
Drive north on 64.
About 15 miles after the junction with 180 turn Right into Forest Road 320.
Follow the signs!







Proposed Boundary for Traditional Cultural





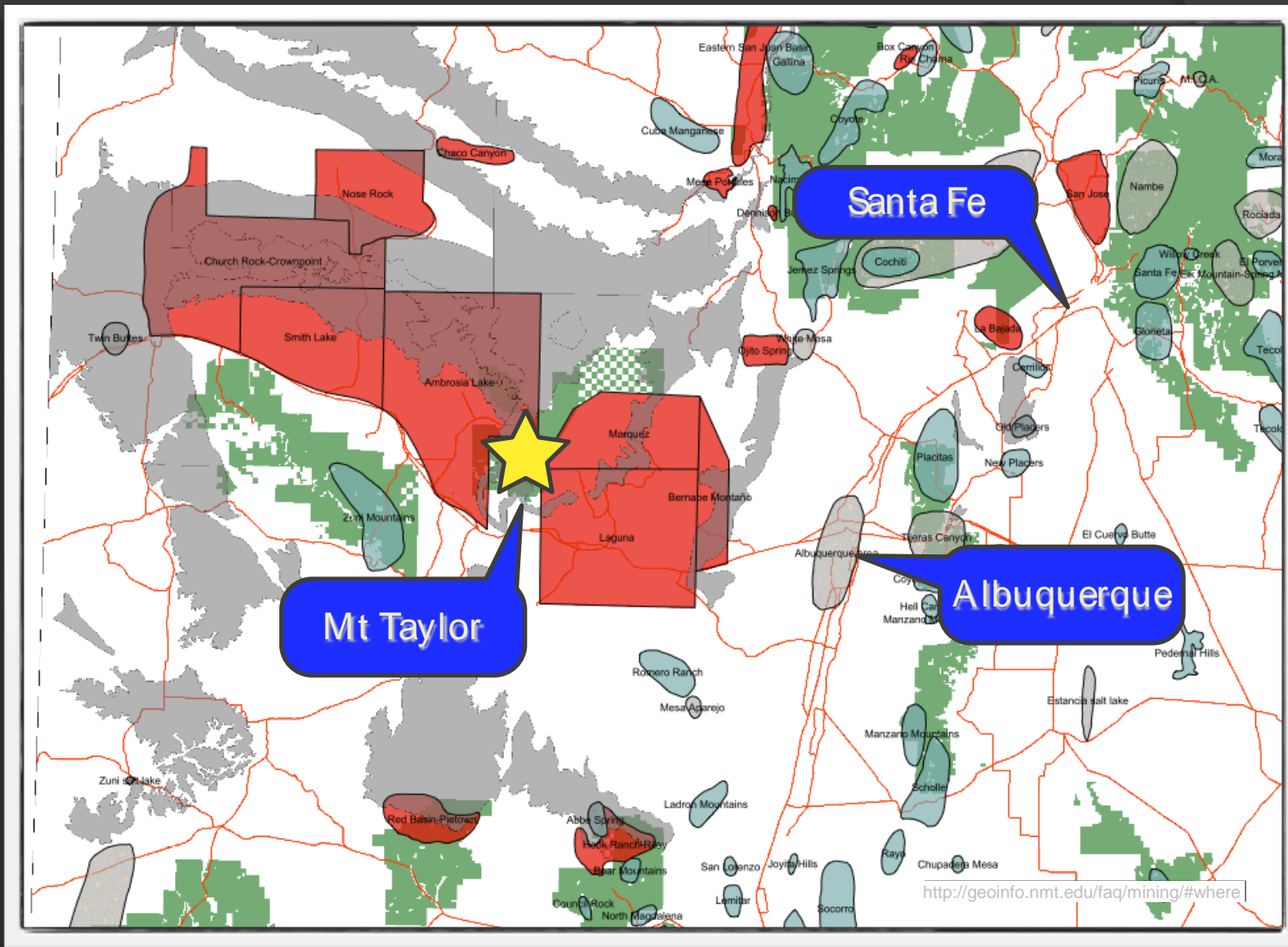
Cultural Landscapes in the Western United States

Cynthia Benedict – US Forest Service

**Defining Boundaries of a TCP: Mt Taylor as a
Case Study**

**NOMINATING TRADITIONAL
CULTURAL PLACES TO THE
NATIONAL REGISTER**

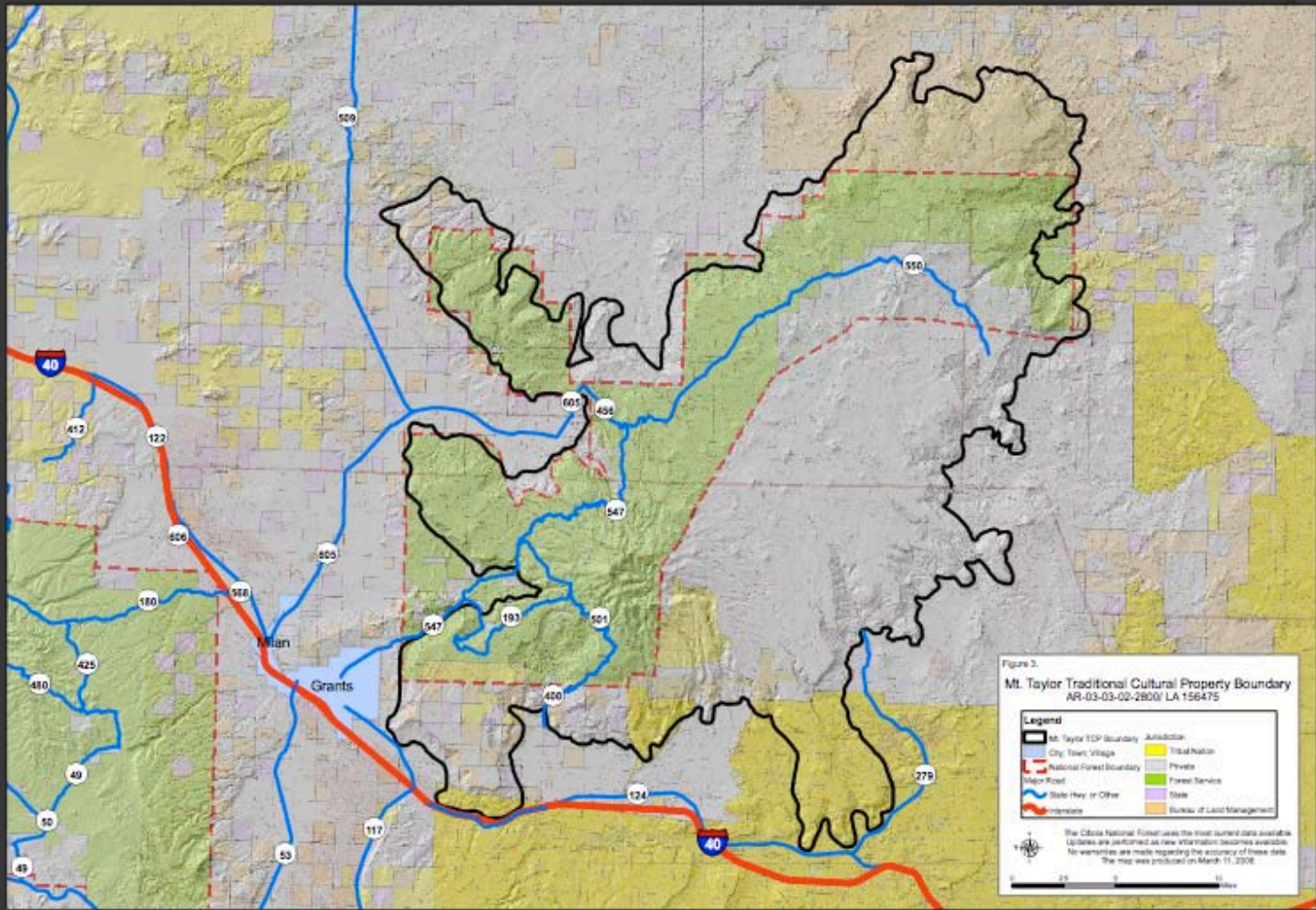




Grants uranium belt

Mt Taylor

- The mountain has long standing and ongoing historical, cultural, and religious importance to the tribes.
- The mountain has been used, and continues to be used by many of the tribes for a variety of traditional cultural activities, such as: collection of plants, stone, minerals, pigments, feathers, soil, sand, hunting, religious pilgrimages, accessing springs, a place for special offerings
- A place that figures prominently in oral traditions regarding origin, place of emergency, and migration.
- The mountain is viewed as a living, breathing entity that embodies a spiritual essence.
- The mountain plays a vital role in cosmology and religion. It is important in ceremony.



Mt Taylor TCP boundary





A Tribal Perspective Mount Taylor