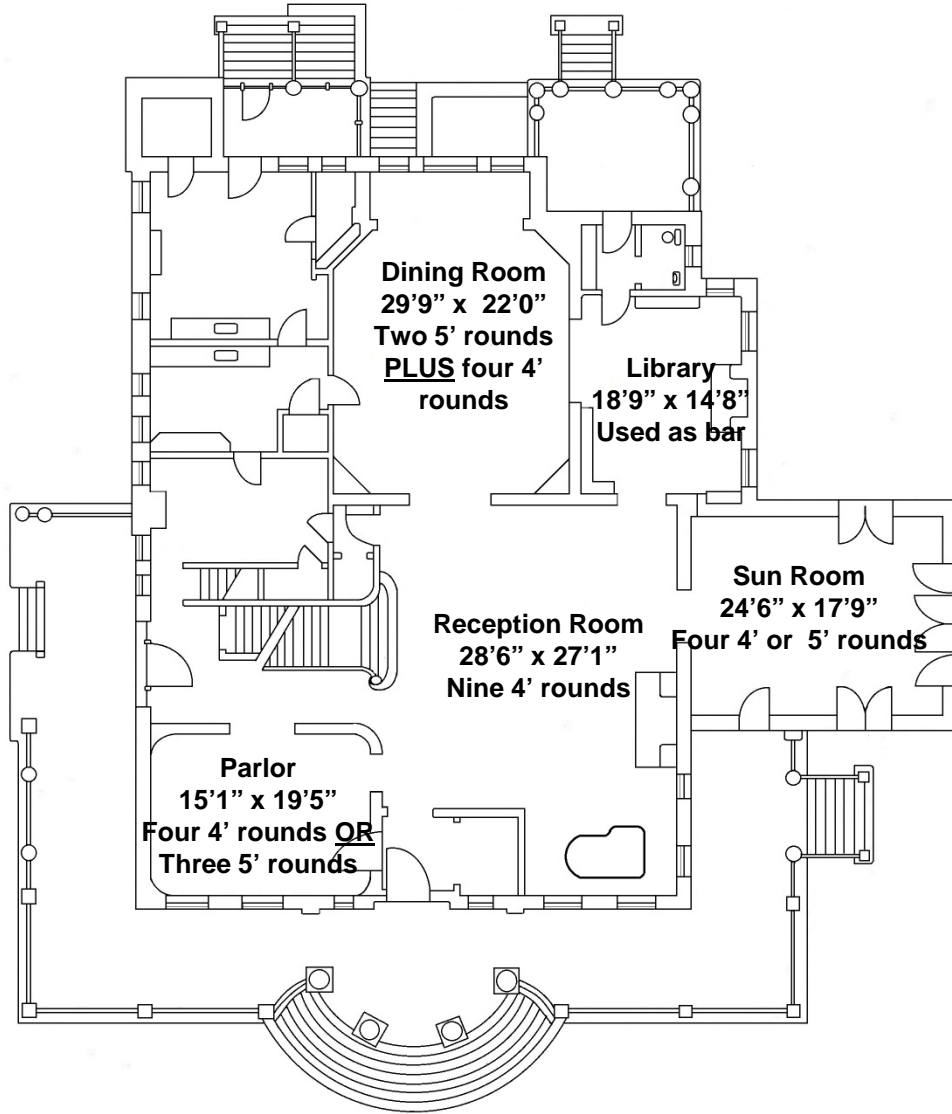




North



Grant-Humphreys Mansion First Floor

Available tables:

- 27 4' rounds
- 5 5' rounds
- 7 6' banquets
- 6 30" high tops
- 200 chairs

Seating:

- 4' rounds can seat 6-8
- 5' rounds can seat 8-10

South Terrace Seating:

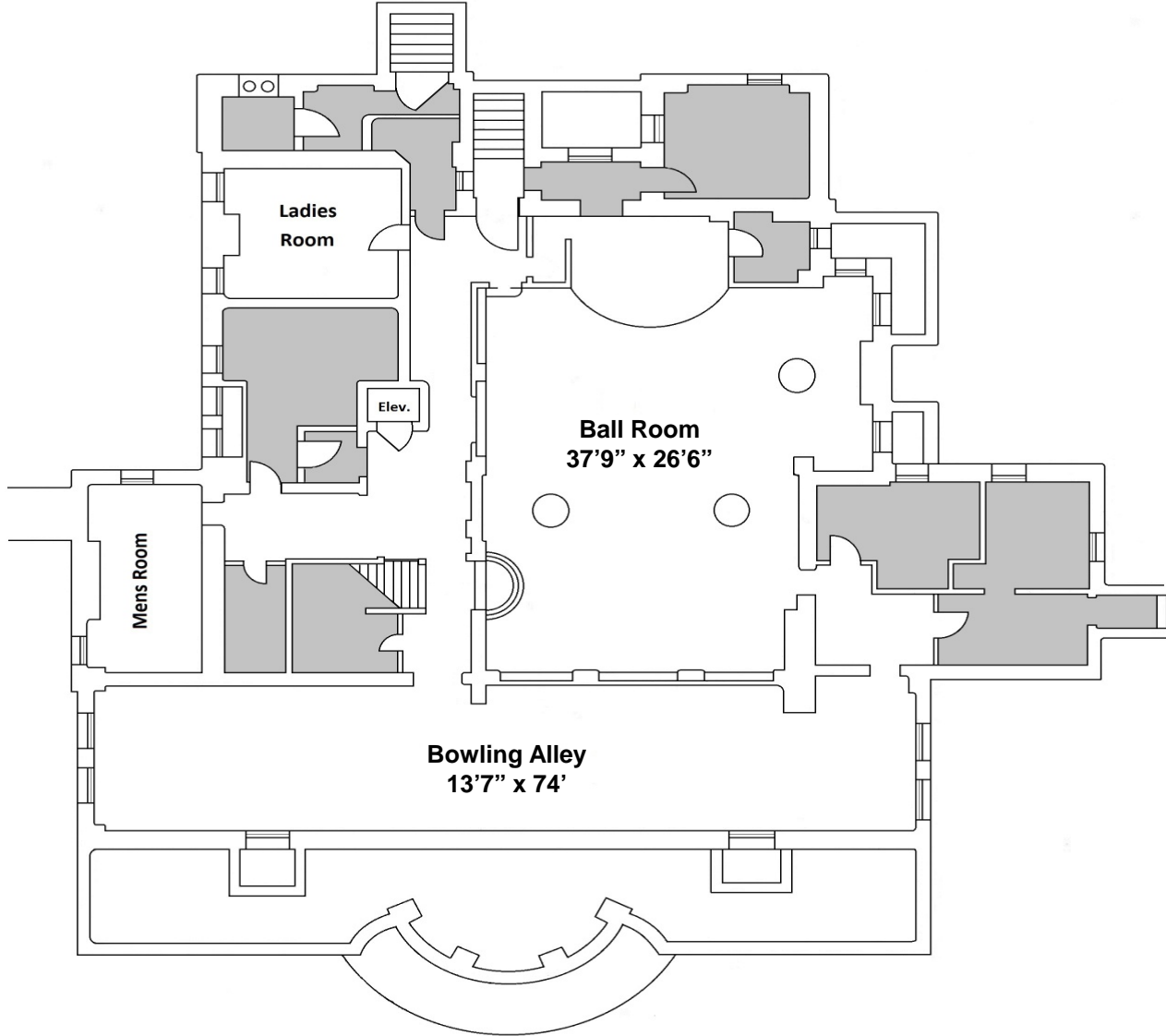
- Can seat 96 max with combination of four 4' rounds and four 5' rounds



West



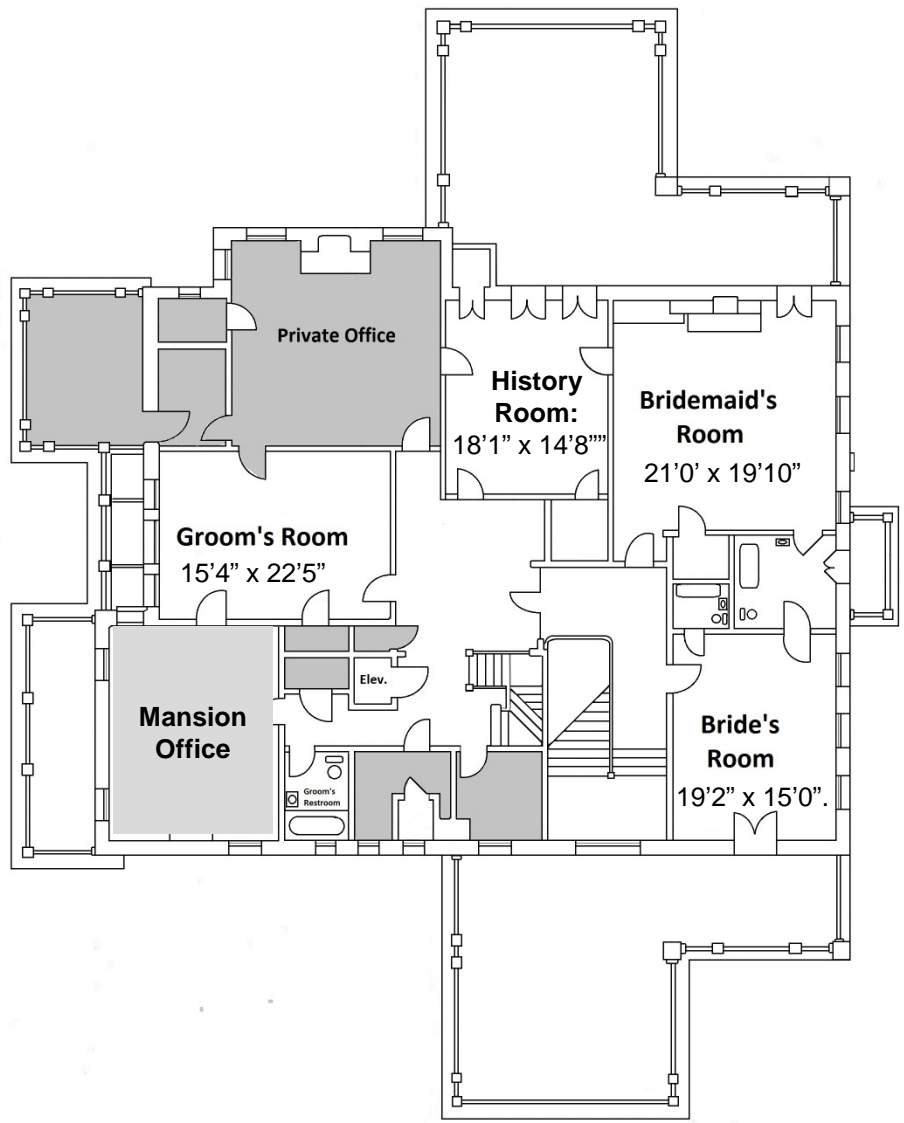
North



Grant-Humphreys Mansion Lower Level



West



Grant-Humphreys Mansion Second Floor

Grant Humphreys In-House Measurements

Reception Room:

- Fireplace mantle 10' 2" long, 9 ½" wide
- Staircase:
 - Length: 22' to bottom stair; 26' curved around and then down to the floor
 - Width: varies from top to bottom:
 - 64" near top to 87" for last step at bottom
 - Number of steps:
 - 4 to the first landing
 - 17 total including 2 landings

Dining Room:

- Height from buffet table to bottom of chandelier: 45"
- Buffet Table:
 - Length: 5' round without leaves or 10'6" (or 126") with all 3 leaves
 - Width: 5' (or 60")
 - Width of each leaf: 22"
 - Height to floor: 30"
- Sideboard: 22" x 68 ½"

Library:

- Bar Table: 80 ¾" x 29 ¾"

Grant Humphreys In-House Measurements

Terrace:

- Columns: 6 ½' to 7'
- Circumference: 29"
- Aisle length:
 - North to south: 43'
 - East to West: 33'
- Lattice screen: 9' x 8'

Ballroom:

- Columns:
 - Height: 7'10"
 - Circumference: 55"
- 4 separate 20amp circuits

Ballroom Stage:

- Length and depth:
 - North to south: 13' 4 ½"
 - East to West: 11' 2"
- Height from dance floor to lights: 1' 3 ½"

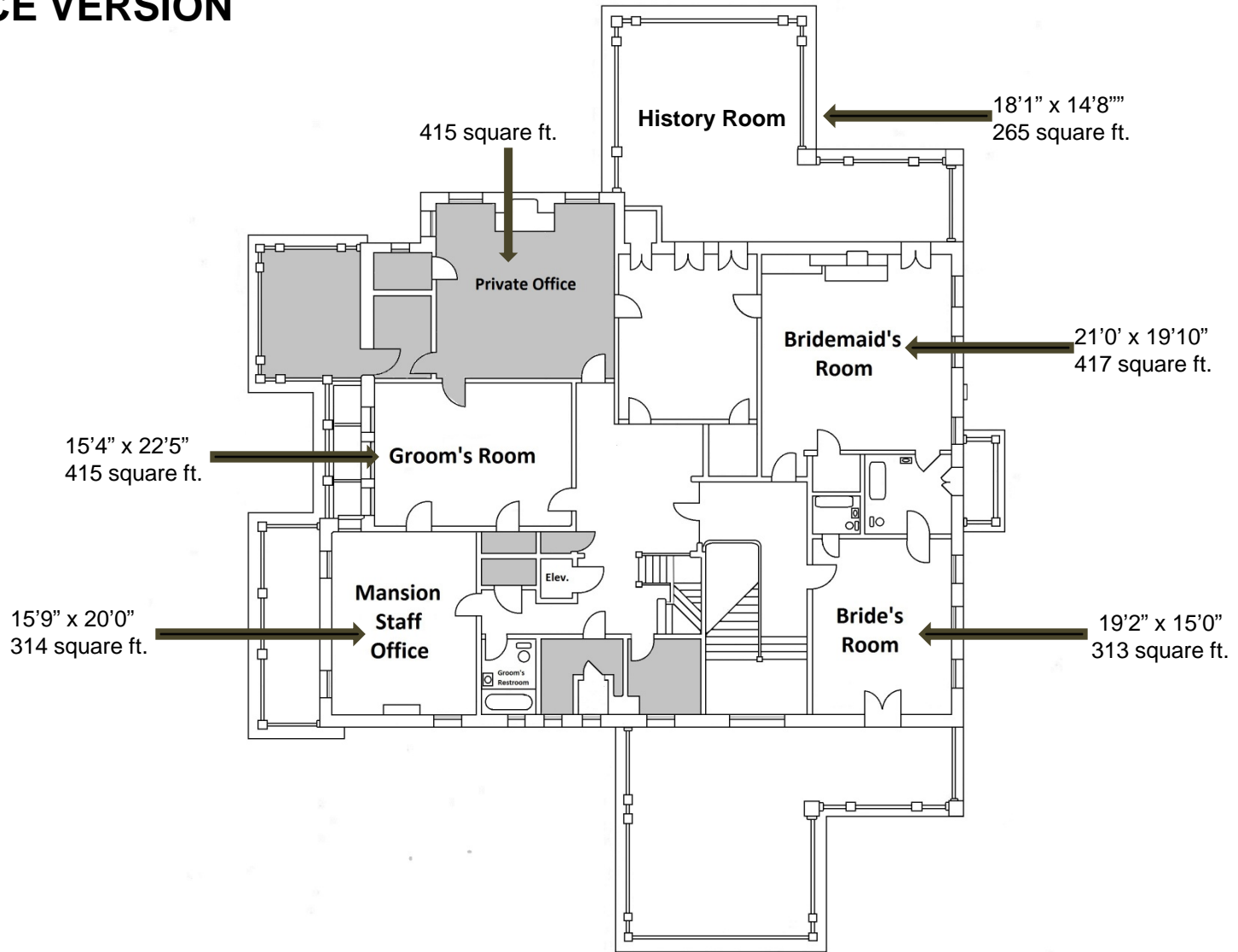
West Mansion Entrance:

- Width between middle columns: 78"

Chairs:

- 200 white resin folding event chairs with padded seats: 31" x 18"

OFFICE VERSION



Grant-Humphreys Mansion Second Floor